

Village Study Tour

Nijalapur (Mahabubnagar)

The Village of Honest People

Group Number 8

Nikhil Soni, Dy. Arch.
Tanmaya Santosh Naik, AEE
Vipul Prajapat, AEE
RamNivas Yadav, AEE



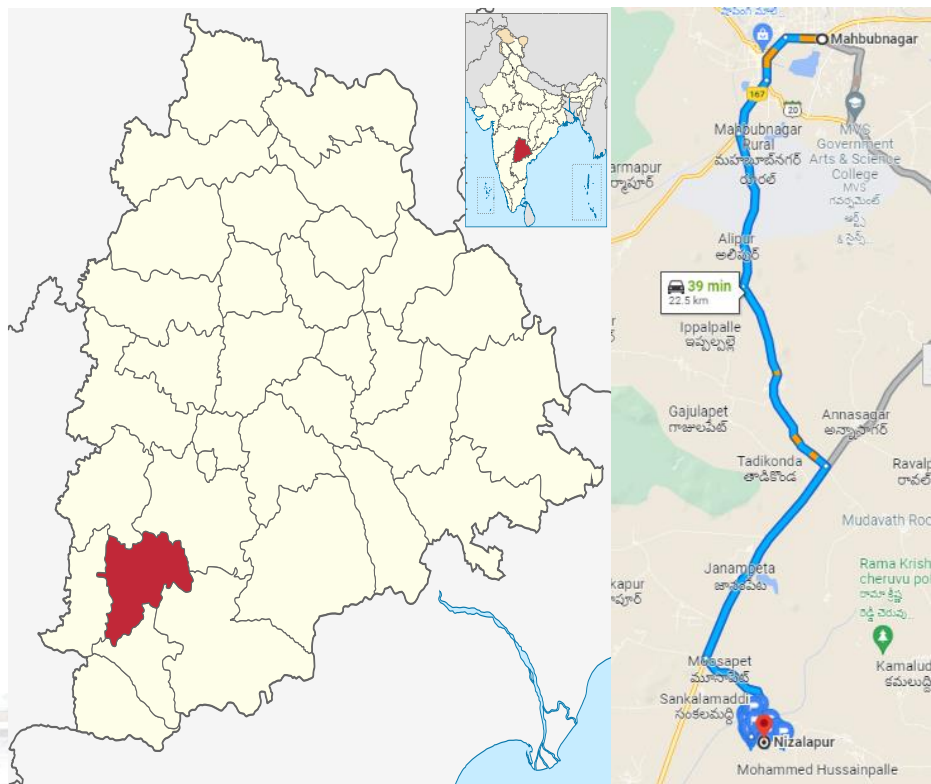
Village Visit: Introduction

- Probational training of Military Engineer Services
- Participatory Rural Appraisal
- Socio-economic-political study
- History, evolution and development of village
- Government and non-government interventions
- Working of village level institutions
- Effectiveness and implementation of various government schemes
- Recommend feasible and effective action plan



Village Nijalapur

- Mandal- Moosapet (3 km), District- Mahbubnagar (25 km), Telangana
- 300 years Old settlement of migrants from Karnataka & Andhra Pradesh (around 1750)
- The village of honest people
- Development in last 1 decade



Particulars	Total	Male	Female
As per Survey by Health Workers			
Total No. of Houses	625		
Population	2960	1450	1510
As Per Census 2011			
Total No. of Houses	506		
Population	2658	1351	1307
Child (0-6)	336	172	164
Schedule Caste	119	64	55
Schedule Tribe	6	3	3
Literacy	57.97%	69.72%	45.84%
Total Workers	1379	758	621
Main Worker	1364		
Marginal Worker	15	13	2

Methodology

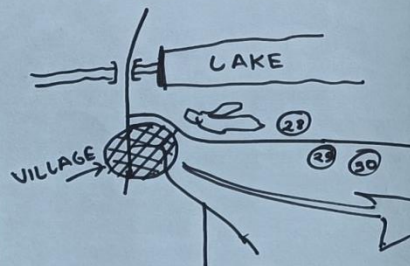
- Transect walk
- Participatory Rural Appraisal
- Primary/ Survey data
- Secondary data
- Conversation with Stakeholders



Day 1: Transect Walk

- ① - NURSERY
- ② - PLANNED GOVT. HOUSING -1 (AUR COLONY)
- ③ - GEETA TEMPLE & HALL
- ④ - COMMUNITY HALL-1
- ⑤ - SPACE FOR VETINARY DOCTOR VISIT
- ⑥ - FSE / PDS SHOP
- ⑦ - COMMUNITY HALL-2 (YADAV)
- ⑧ - HIGH SCHOOL
- ⑨ - ANGANWADI -1
- ⑩ - PRIMARY SCHOOL
- ⑪ - MEDITATION CENTRE
- ⑫ - SEWAGE DISPOSAL POND
- ⑬ - PLANNED GOVT. HOUSING -2
- ⑭ - PLANNED GOVT. HOUSING -3 (KCR)
- ⑮ - OVERHEAD TANK-1
- ⑯ - PALLE PRAKRUTI VANAM (GARDEN)
- ⑰ - CSR RO WATER
- ⑱ - OVERHEAD TANK-2
- ⑲ - OUTDOOR GYM (UNDER CONSTRUCTION)
- ⑳ - PANCHAYAT BHAWAN
- ㉑ - ANGANWADI -2
- ㉒ - OLD PANCHAYAT BHAWAN
- ㉓ - COMMUNITY HALL-3 (FISHERMAN)

- ㉔ - ANGANWADI -3
- ㉕ - TEMPLE
- ㉖ - ELECTRICAL SUBSTATION
- ㉗ - SELF HELP GROUP
- ㉘ - GARBAGE DISPOSAL & SEGREGATION
- ㉙ - SHAMSHAN 2 GRAVEYARD
- ㉚ - GOVT FORESTATION
- ㉛ - AUTO STAND



Village Map





Day 2: Rangoli Map Exercise

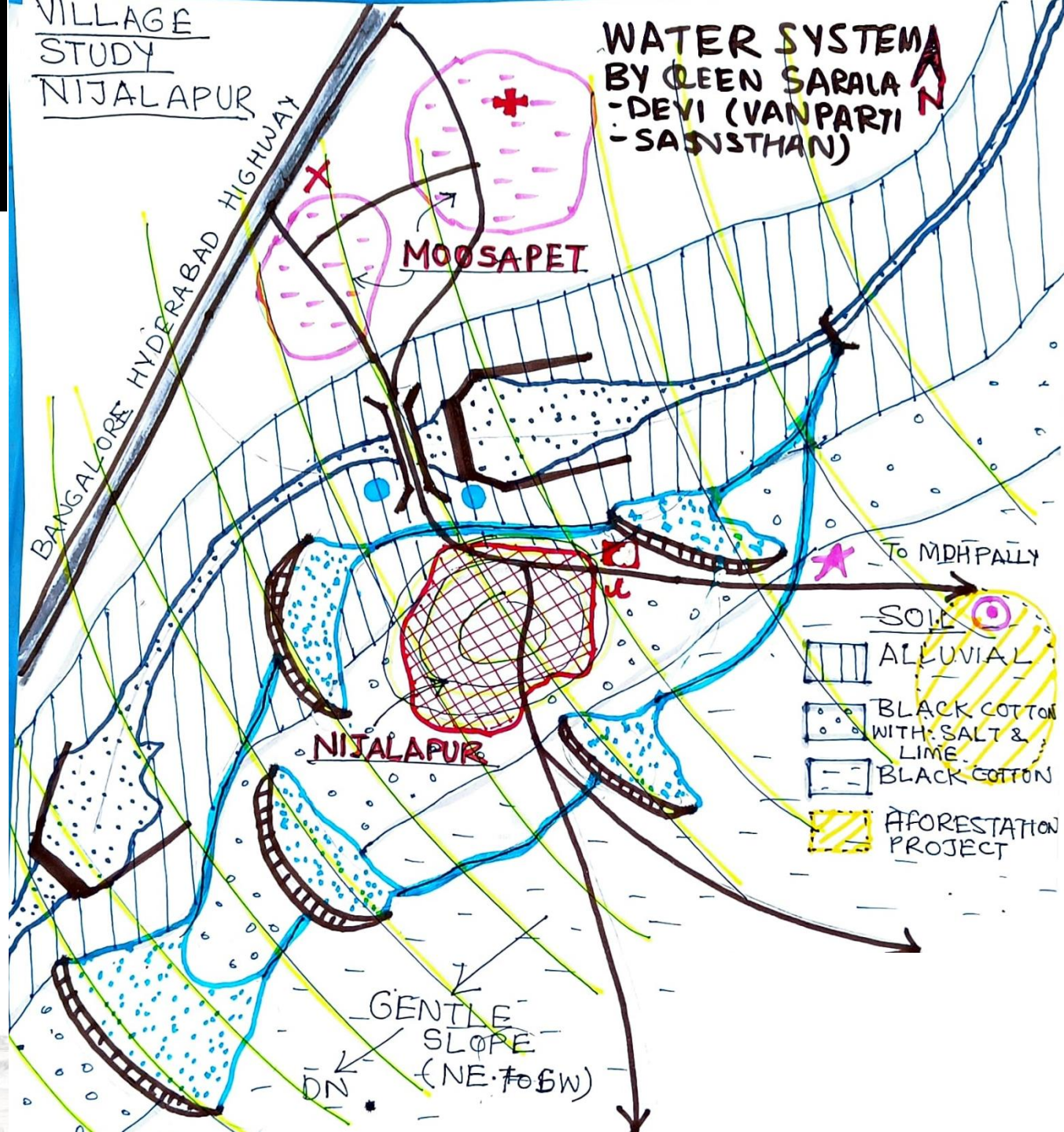







Resource Map

VILLAGE STUDY
NIJALAPUR

WATER SYSTEM
BY QEEN SARALA
-DEVI (VANPARTI
-SANSHTHAN)

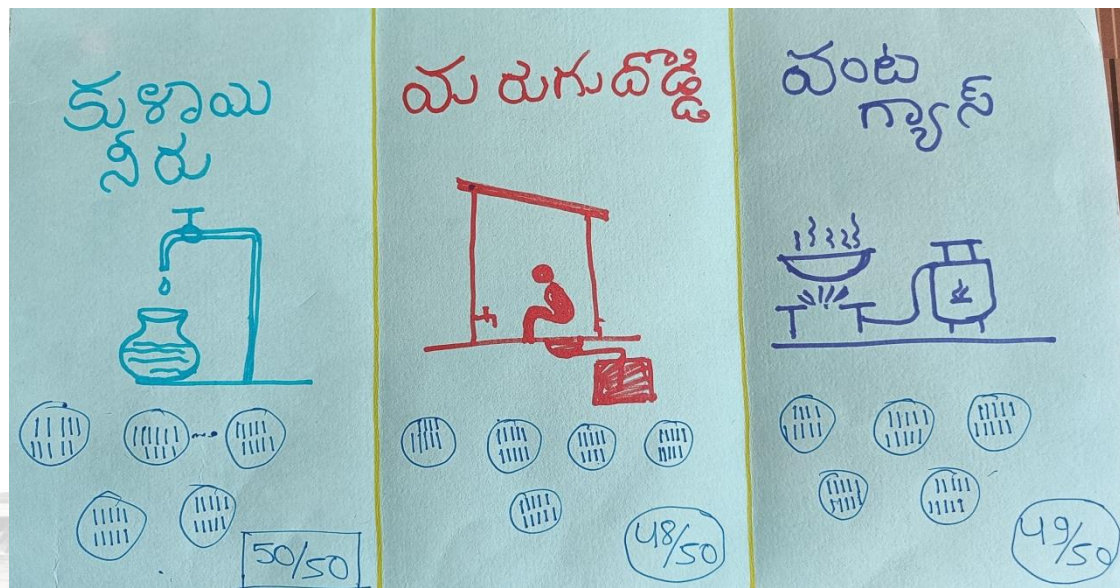
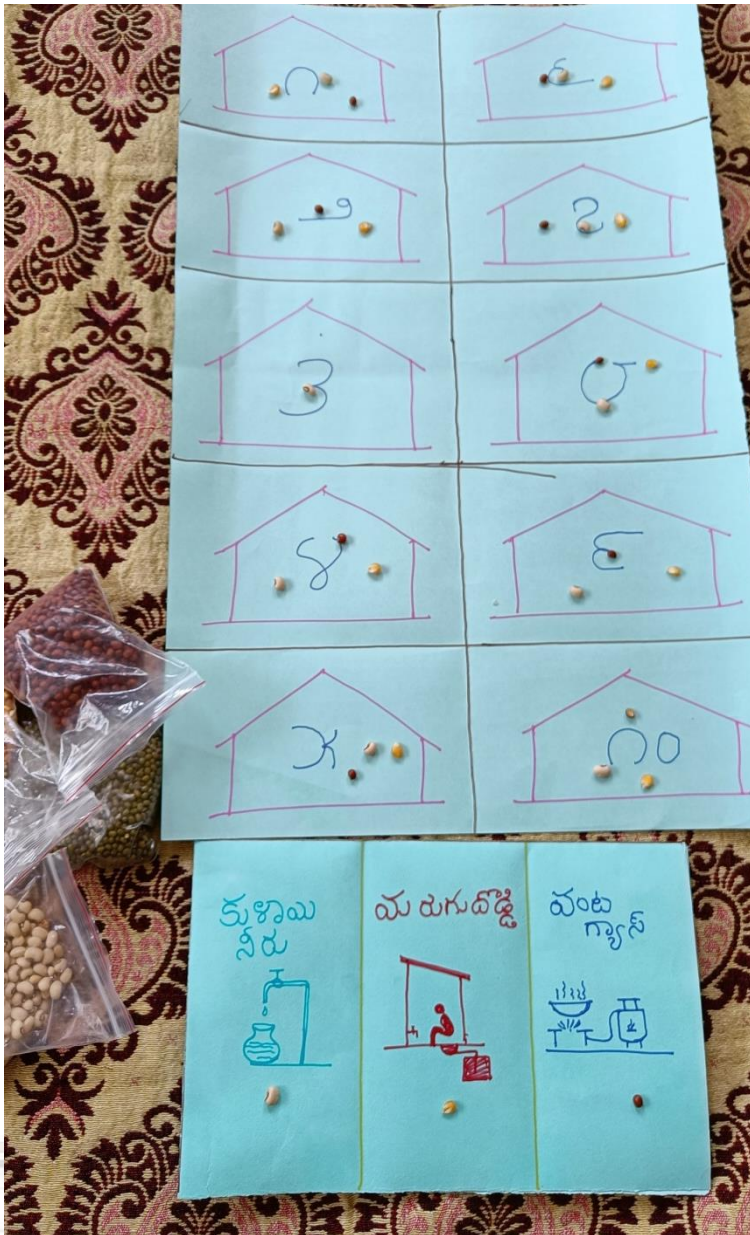
-  ANCIENT EARTHEN BUNDS
-  MODERN CHECK DAMS
-  BRIDGE
-  ROAD
-  HIGHWAY
-  ANCIENT CANALS
-  ANCIENT MAN MADE LAKE/TANK
-  RIVER
-  MODERN MAN MADE LAKE/TANK
-  ANCIENT WELL
-  CONTOUR (ROUGH)
-  SEWAGE DISPOSAL
-  GARBAGE DISPOSAL & SEGREGATION (Govt)
-  SHAMSHAN & GRAVEYARD
-  POLICE STATION
-  SUB-HEALTH CENTER
-  MEDITATION CENTER (Private)
-  CANALS



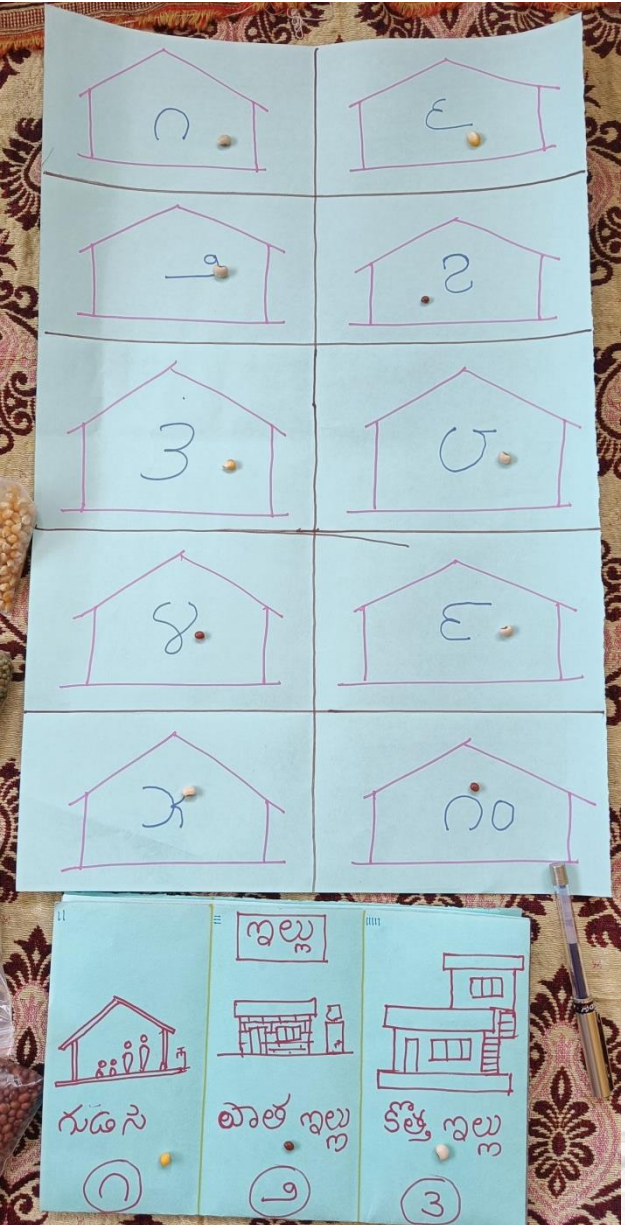
-  SOIL
-  ALLUVIAL
-  BLACK COTTON WITH SALT & LIME
-  BLACK COTTON
-  AFFORESTATION PROJECT

GENTLE SLOPE (NE TO SW)
DN

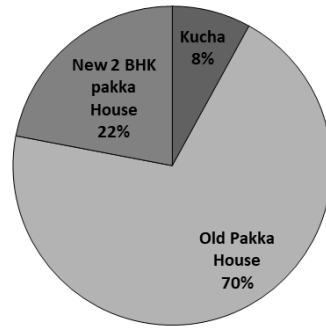
Day 3: Primary Survey



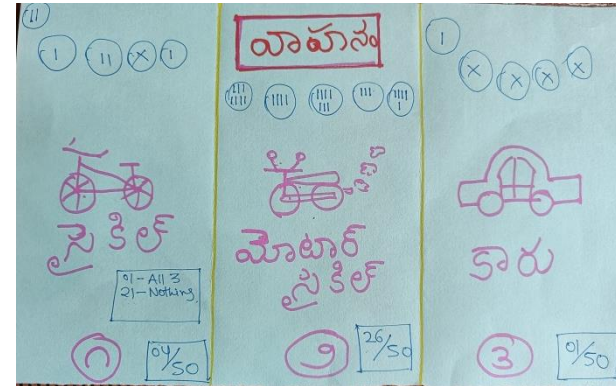
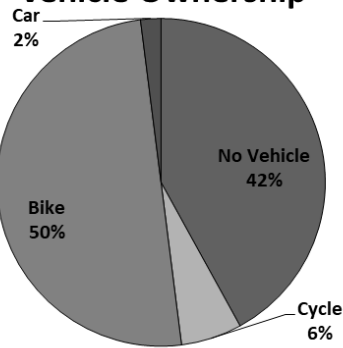
Day 3: Poverty Analysis



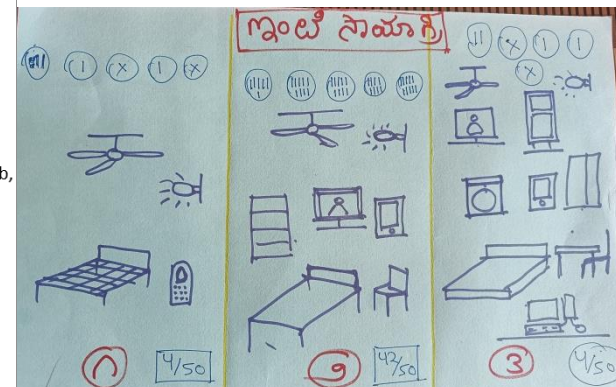
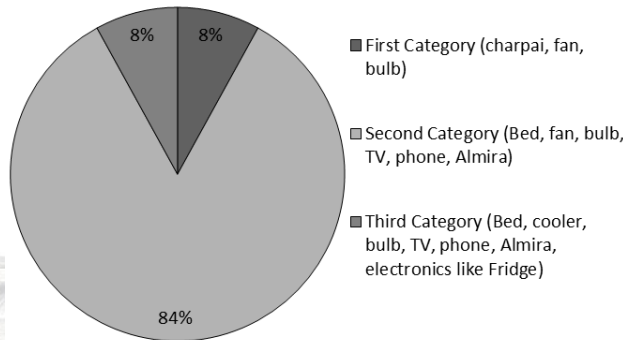
Housing Condition



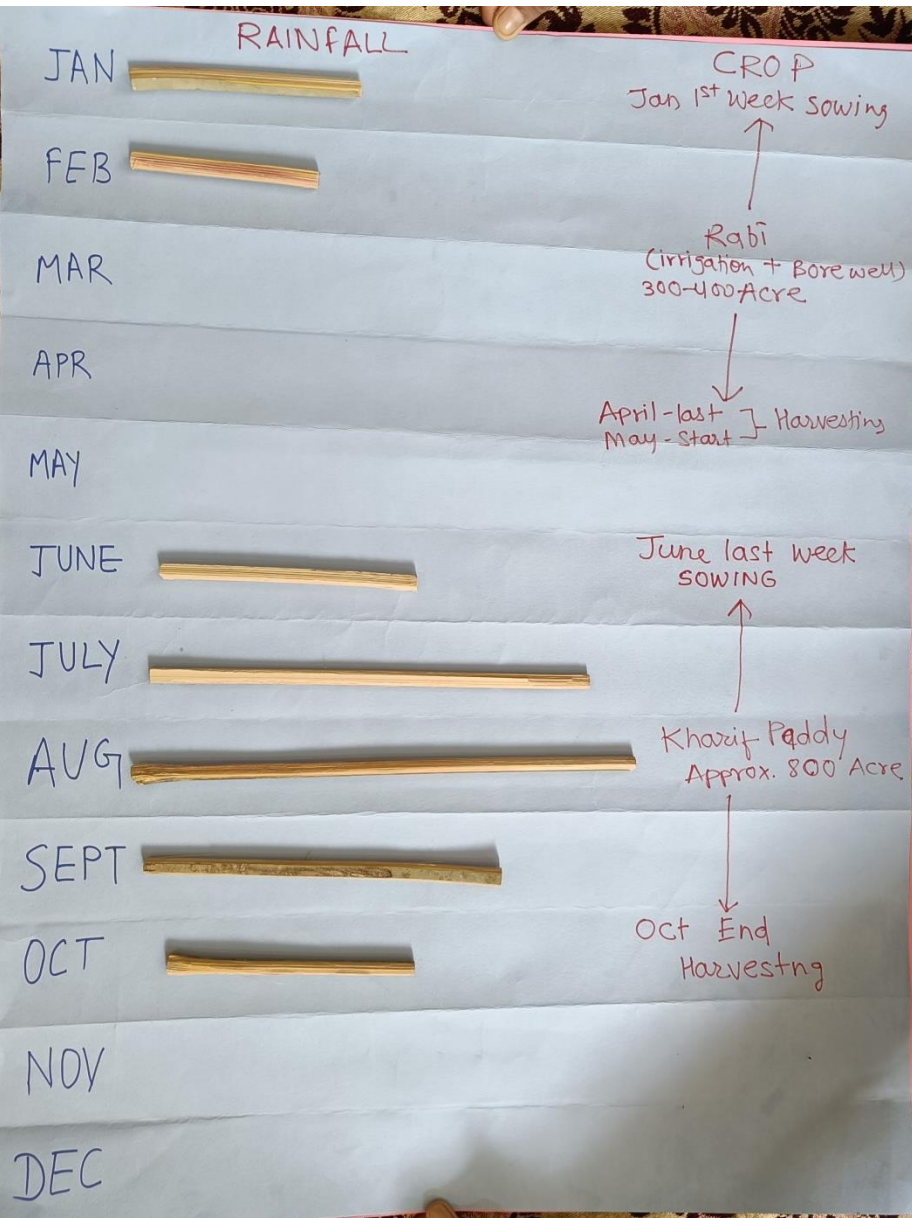
Vehicle Ownership



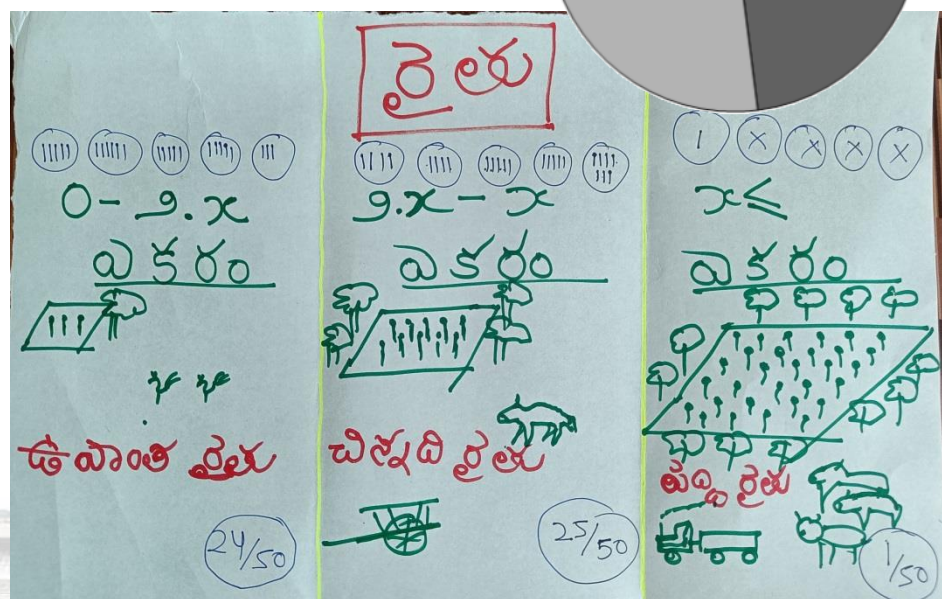
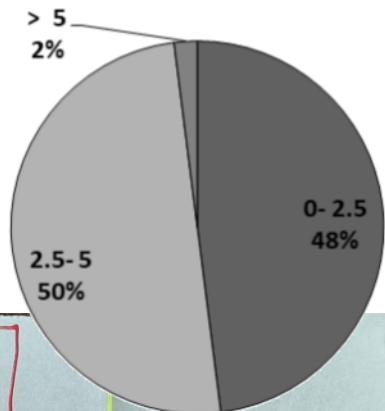
Household Goods



Day 3: Meeting with Elders & Farmers



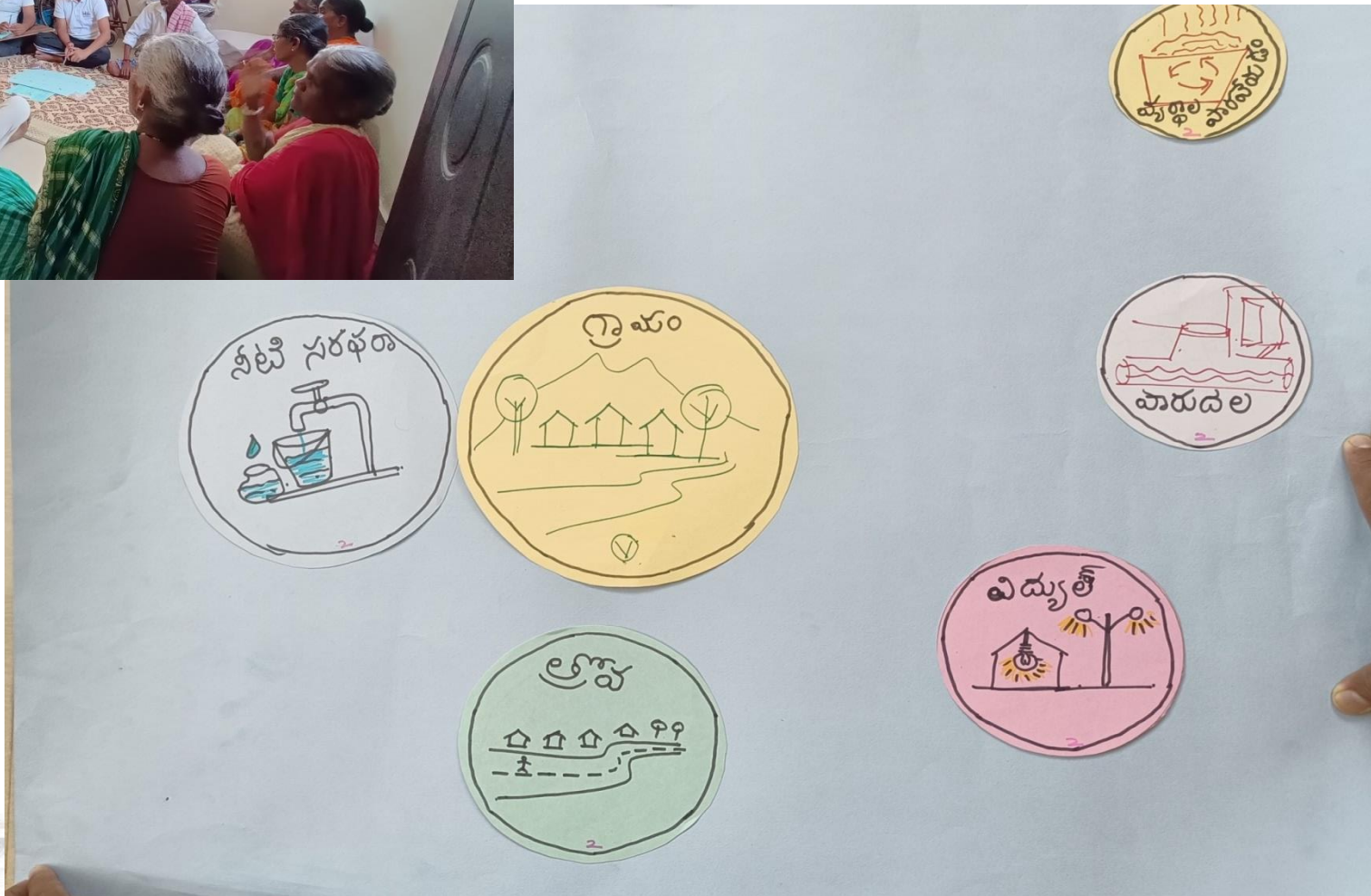
Farm Size (Acre)



Day 3: Institution Ranking and Effectiveness



Day 3: Services Ranking and Effectiveness



Day 3: Demand Ranking and Urgency



Day 3: Meeting with Elders



1750

- Village formed by migrants from Karnataka & Andhra Pradesh

1850

- Irrigation system & Feeder Channel

1920

- First Pucca House

1950 –
1970

- Hanuman Mandir, First Govt. Primary School

1980 -
1990

- Electrification, Ram Mandir, New GP Formed, PDS Started
- Mud Roads Construction

1990 -
2000

- First Landline Phone, First TV, Community Water Taps

2000 -
2010

- Anganwadi Centre; MGNREGA, High School

2010 -
2020

- Bridge & road Construction
- New GP Building, Fisherman Community Hall, Nursery, RO Plant
- KCR 2BHK Housing Scheme, Underground sewage, Water supply
- Garbage Segregation, Crematorium, Palle Prakruthi Vanam,
- Check Dam & irrigation system

Day 4: Secondary Data Collection



Schools

Anganwadis

Panchayat

PDS

VHSNC

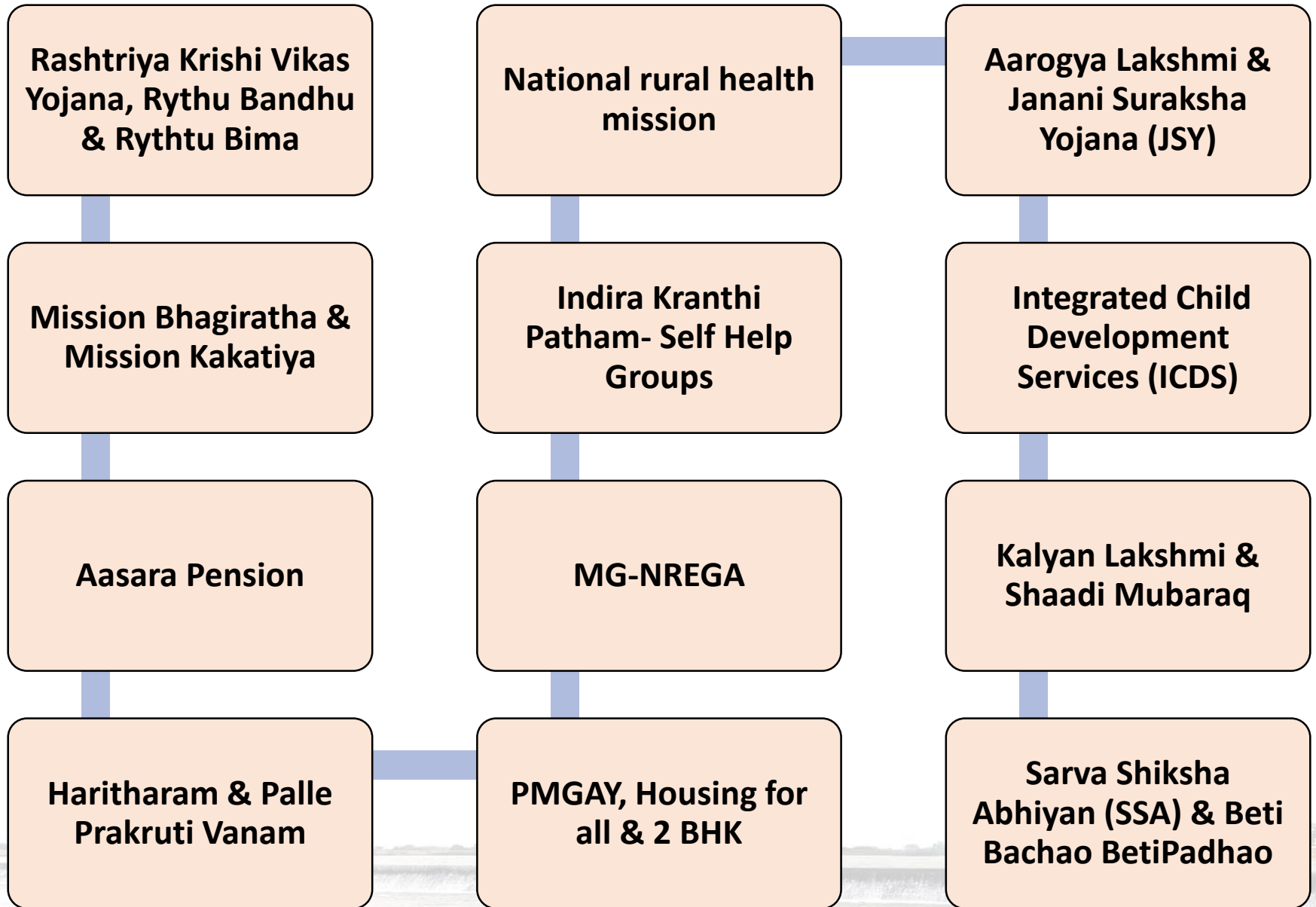
ANM/ ASHA

ADO

DARO



Flagship Schemes



Roads & Transportation



Electricity

- 100% electrification
- ESS & transformer
- Street lights
- Electricity to farms



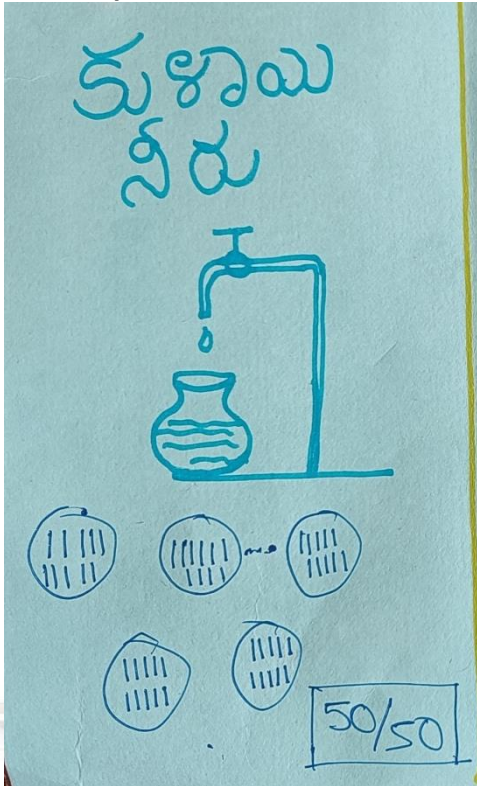
Water Resources and Irrigation

- Check dam reservoir on river
- Irrigation canals
- Lakes and tanks
- Wells and tube wells
- Very low water table (200-300 ft)
- Most farmers are dependent on rain



Water Supply

- 2 OHT
- Treated water supply to all
- Lakes, wells,
- River & tubewell
- RO plant



Sanitation



Waste Management



Health

- No healthcare infrastructure
- 3 Asha & 1 ANM
- 1 private doctor visit/ month
- 1 VHSNC/ month
- Mid day meal



Education

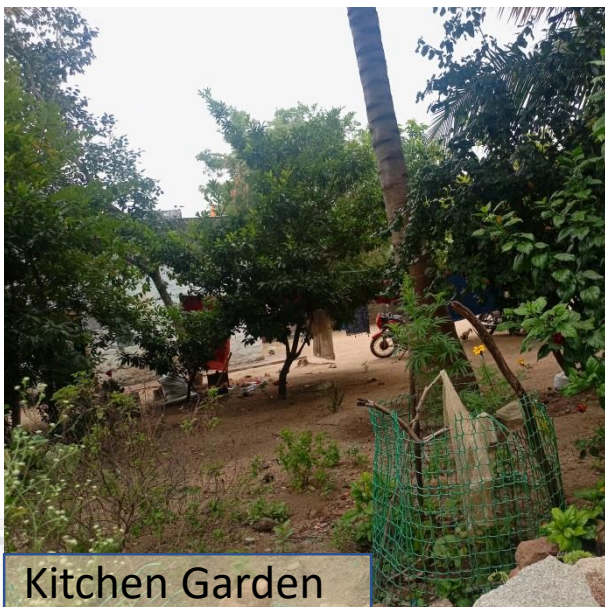
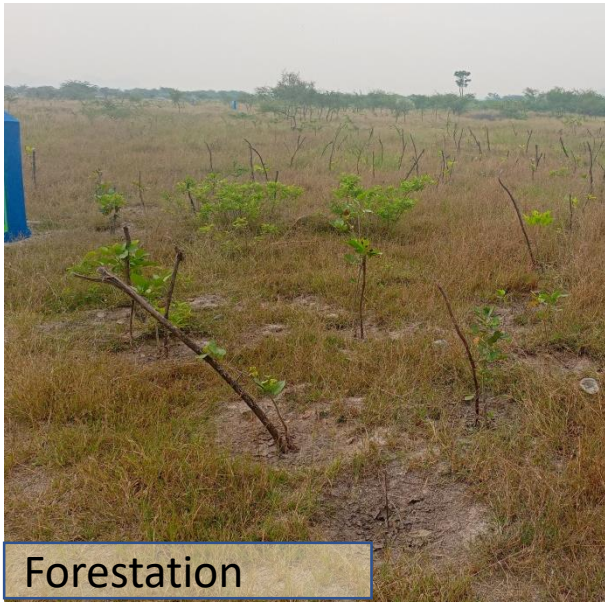
- 3 Anganwadis (1 rented)
- Primary School
- Secondary School
- No playground & Library
- Inadequate space & furniture
- Buildings in poor state
- Toilets & kitchens need water supply and sanitation



Social Infrastructure



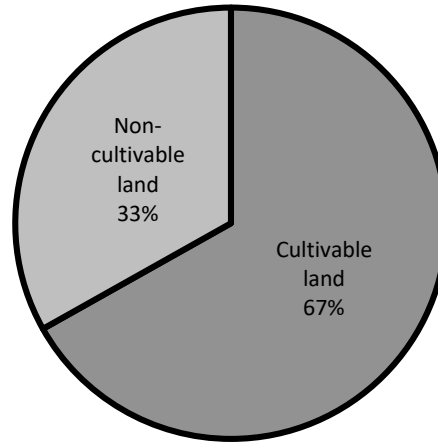
Plantation Initiatives



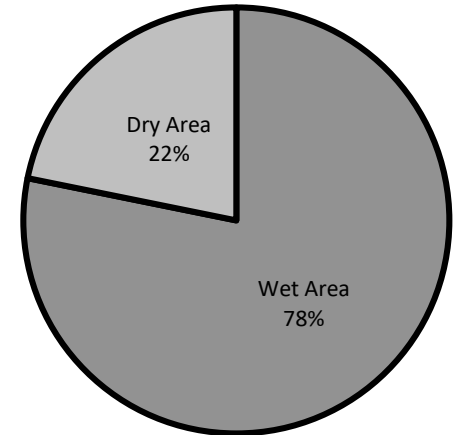
Agriculture



Land Resource



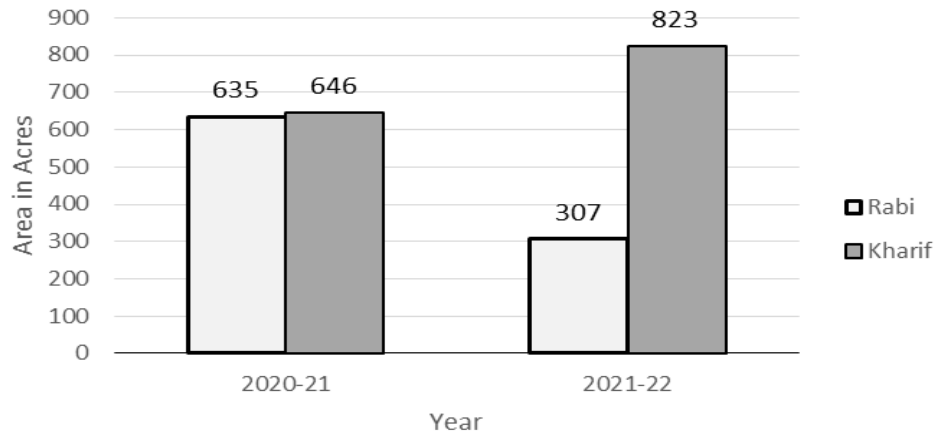
Land Irrigation Status



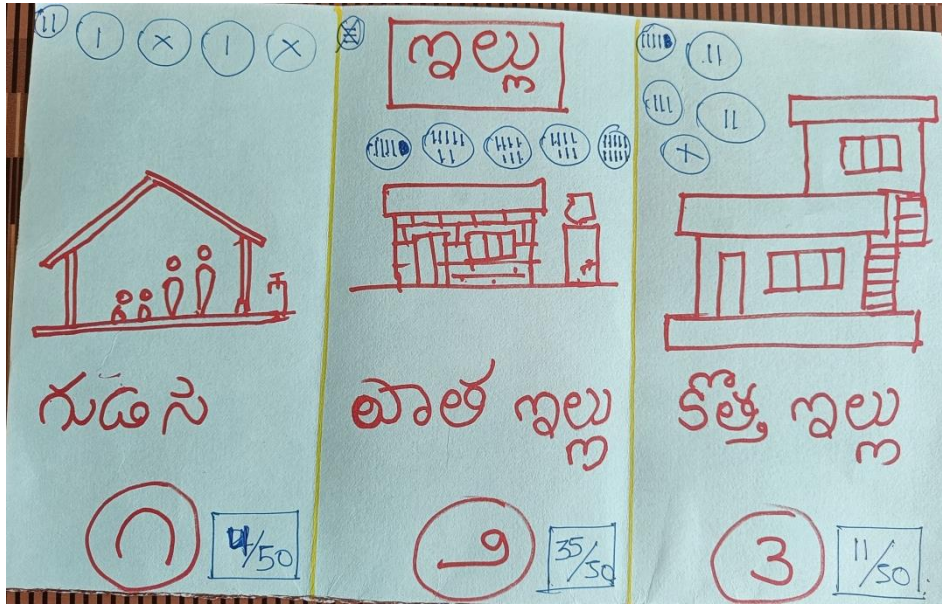
Farmer Details	
Total Farmer	541
Marginal (0-2.5 acre)	204
Small (2.5-5.0 acre)	323
Other (5.0+)	14

Geographical Area	
Cultivable land	825
Non-cultivable land	409
Wet Area	645
Dry Area	180

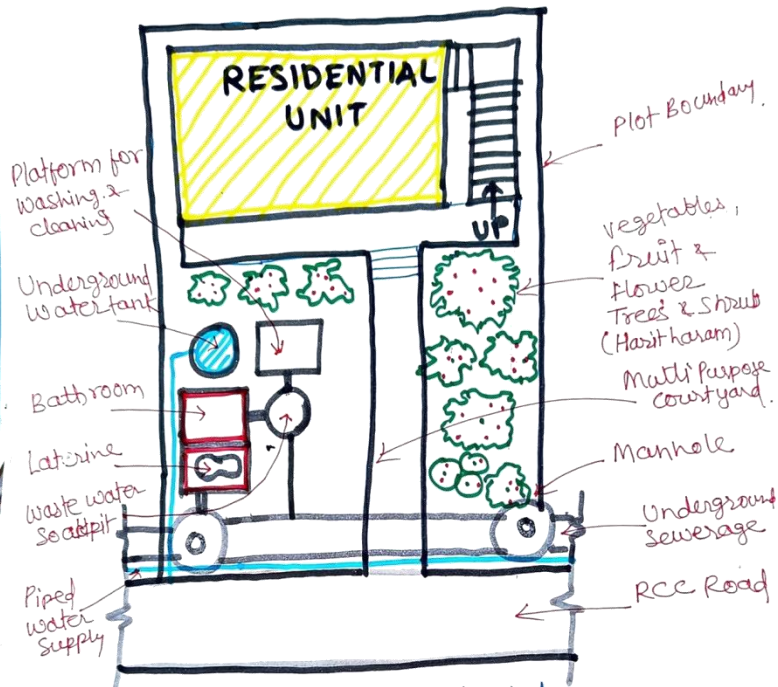
Paddy Farming



Housing



Housing

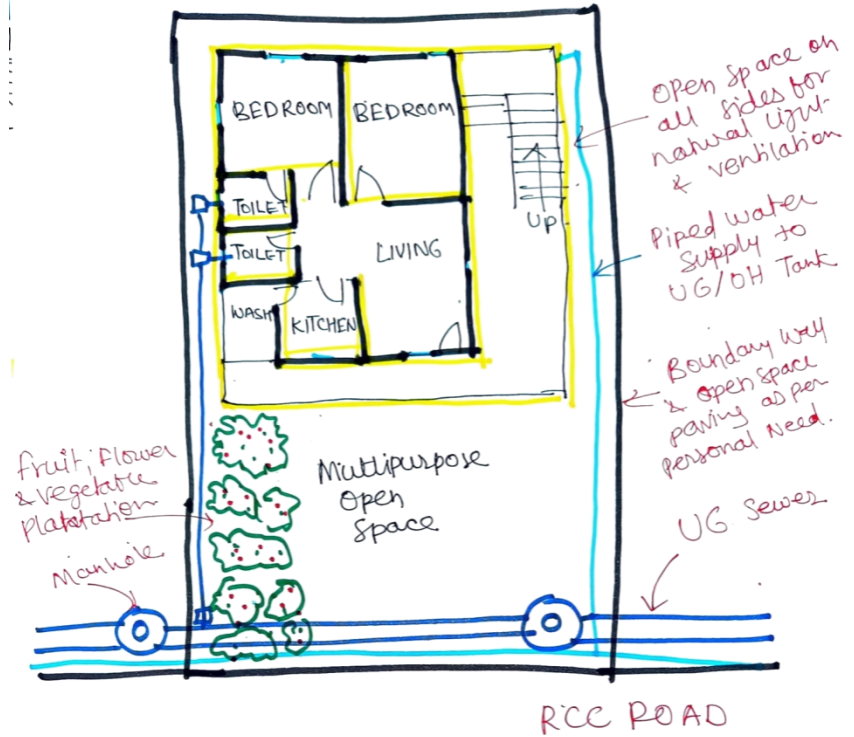


Typical Village House layout at Nizalapur (Old Settlements)



Clustering

- Low Density Planning
- Courtyards & Open spaces for outdoor Activities
- Natural ventilation & lighting
- Shared Community spaces
- Generally No boundary walls



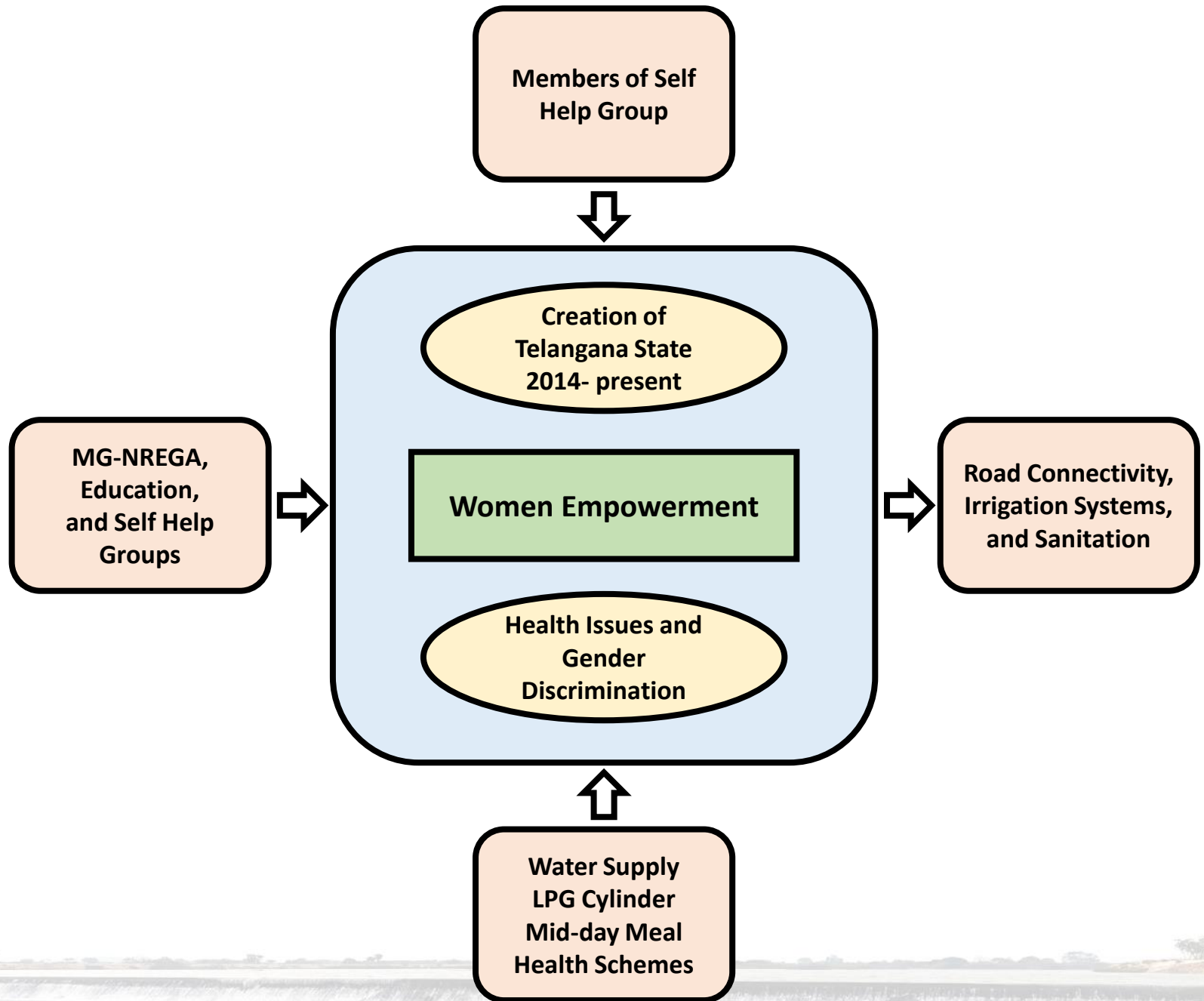
Typical layout of 2BHK Govt Planned Housing



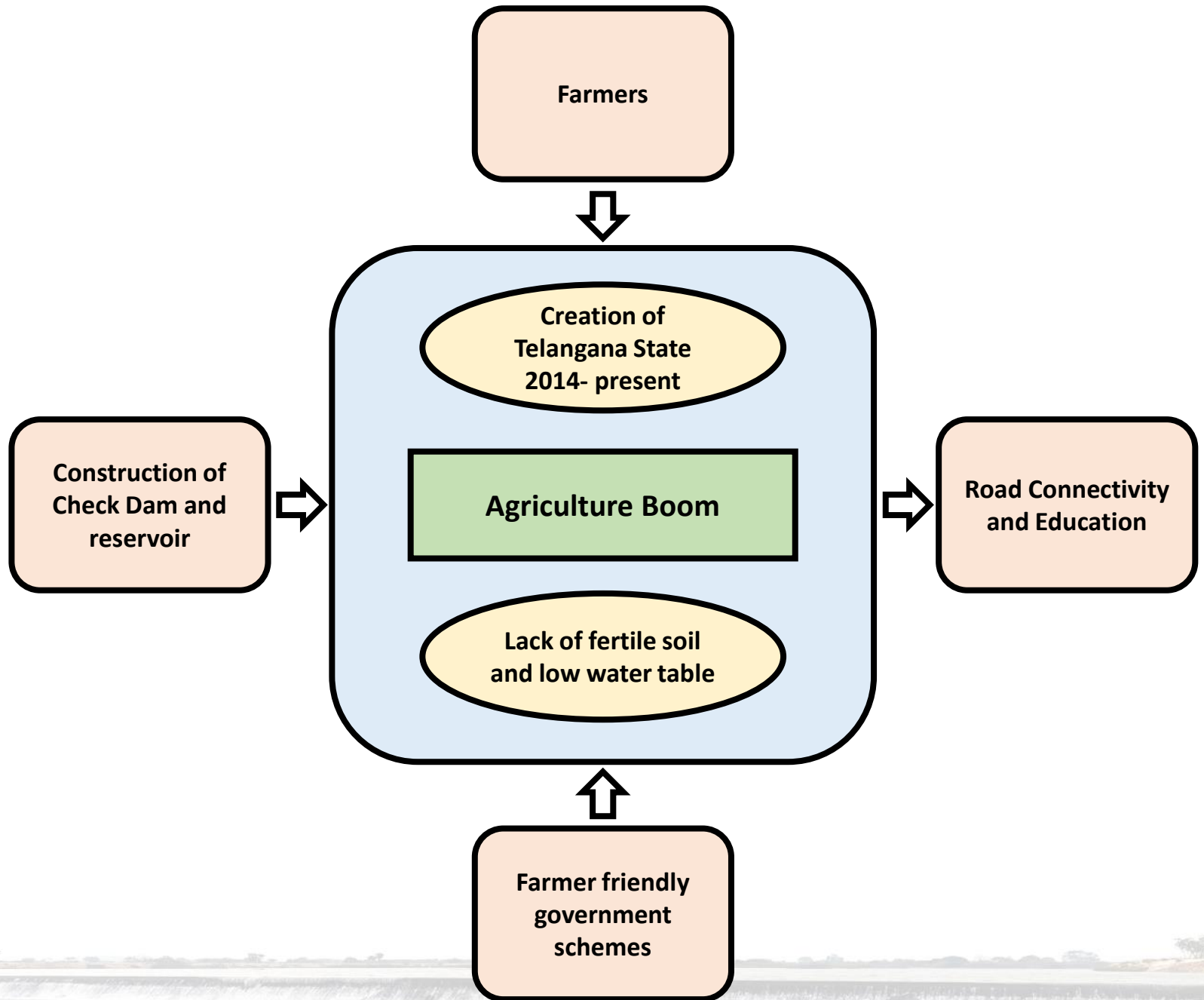
Schematic Plan.

- Large open space for Agricultural Activities
- RCC ROAD (TO BE USED AS PER COMMUNITY NEEDS)
- HARIT HARAM

Conclusion: Social Change



Conclusion: Economic Change





Thanking You