

# BITTURPALLY





# VILLAGE ATTACHMENT

- VILLAGE-BITTURPALLY
- MANDAL- BHEEMINI
- DISTRICT- MANCHERIAL
- STATE- TELANGANA

# GROUP-12

- Uddeshya Kumar (GL), MHA -B23
- Manoj Kumar Puran(AGL), UPSC -C59
- Alok Kumar Jha, MoHUA-C26
- Ajay Gahlot, Civil Aviation-A03
- Anikesh, MoA&FW -D01

# LOCATION IN MAP

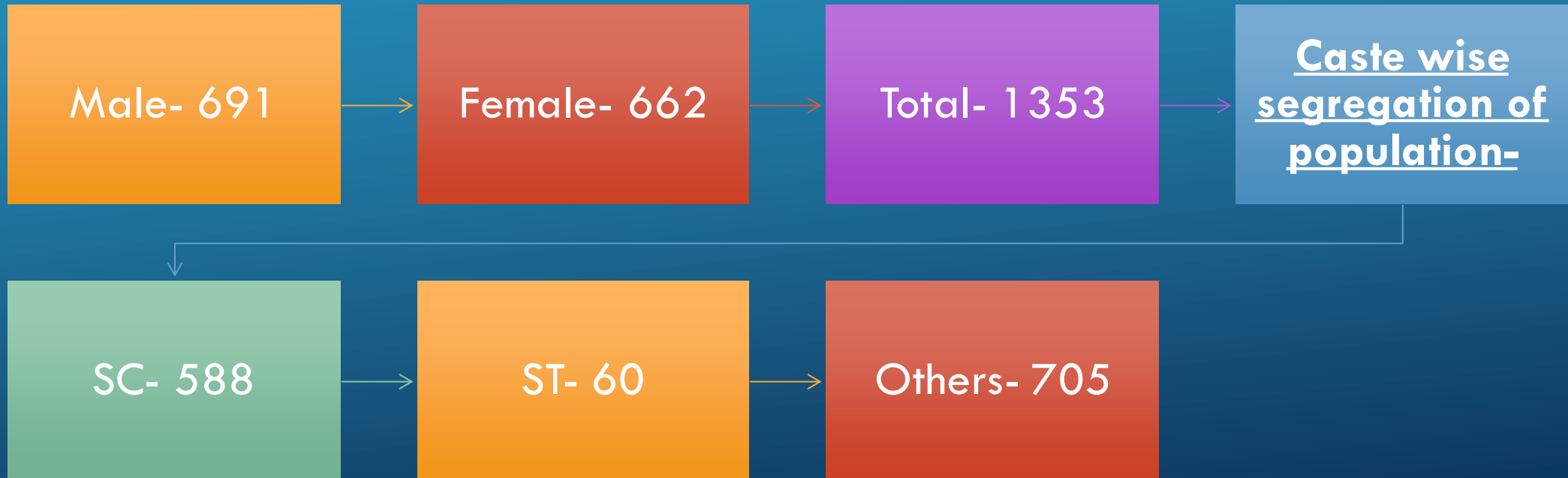


- Betturpally GP is situated in Bheemini Mandal, mancheri district which is almost 250 km away from Hyderabad.
- There are 4 habitations namely Bitturpally, Rampur, Rajaram, Peddagudipeta.
- This GP is ODF++ declared in 2021.





# POPULATION



- Resource map- it focuses on the natural resources in a community like land, hills, rivers, fields, vegetation.
- Social map- it helps to visualize and situates the location of households and other social infrastructure in a village.





# SEASONALITY GRAPH

- Water crisis- MOSTLY SEEN IN APR-JUN





# UNEMPLOYMENT-MOSTLY IN AUG-SEP





# CHAPATI DIAGRAM

Evils in society

DANGER  
to US



POLICE

P.D.S. UNIT

WE

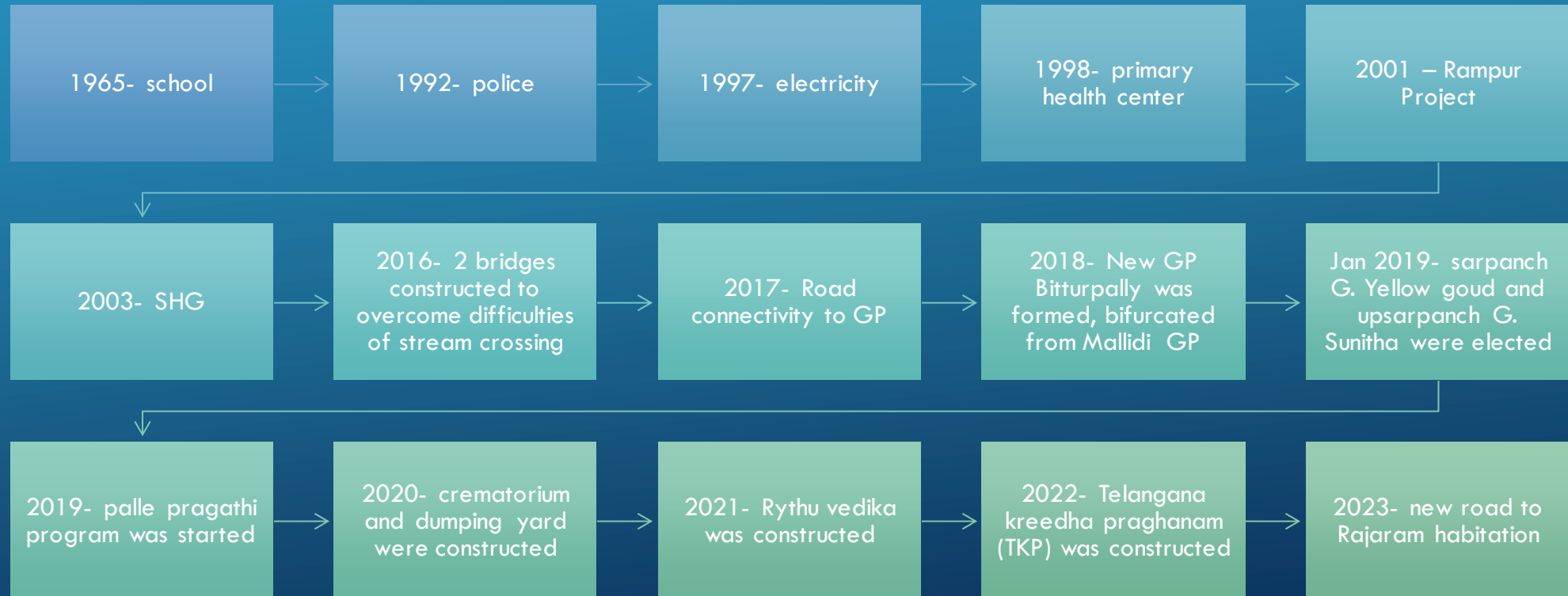
G.P. OFFICE

PHC

Most accessible

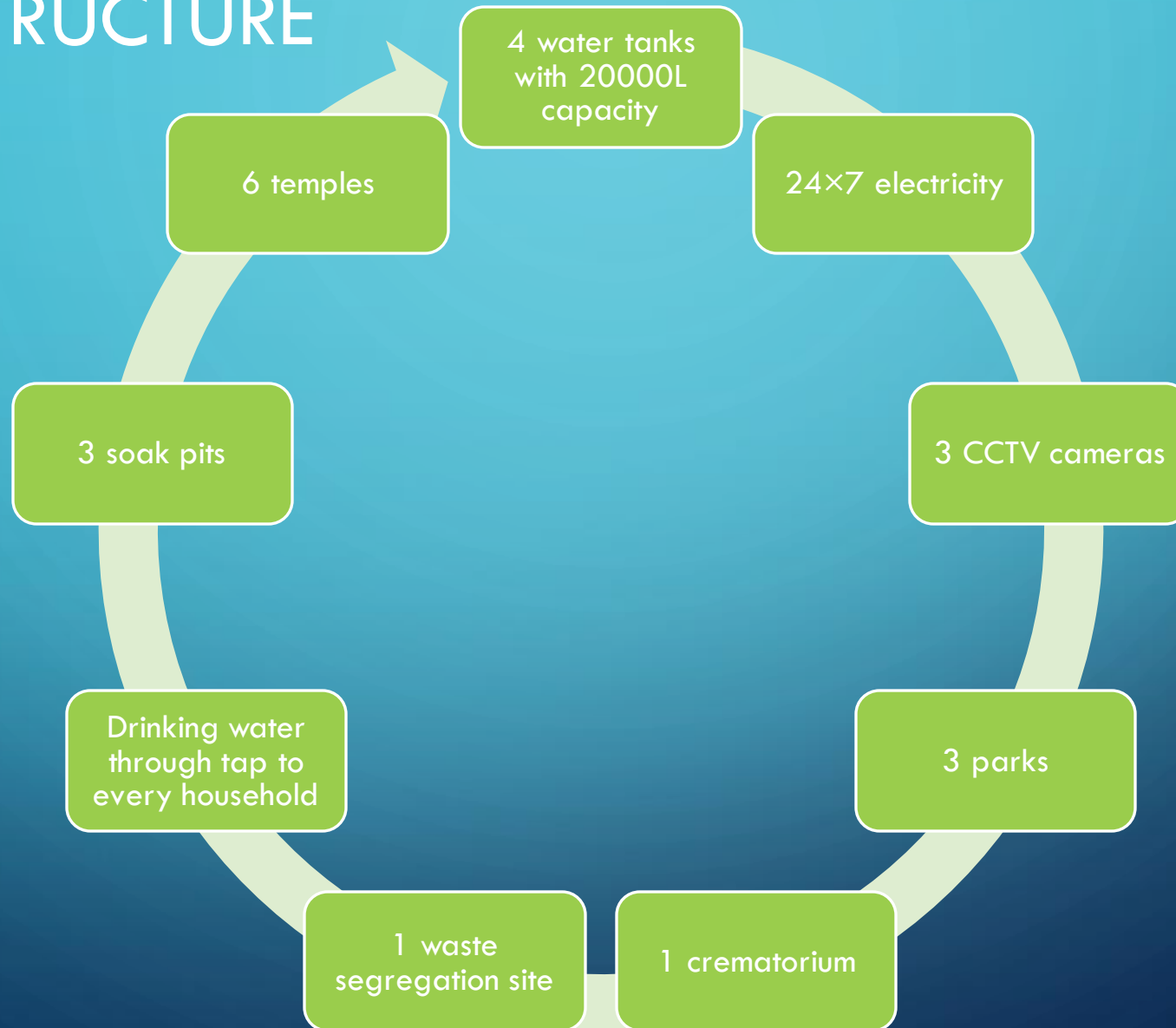
SCHOOL

# TIMELINE





# INFRASTRUCTURE





# INFRASTRUCTURE



**Park**

19/10/2023 17:28



**Water tank**

17/10/2023 15:49



**GP TRACTOR**



# INFRASTRUCTURE



Community  
borewell

17/10/2023 21:28



PHC



Soak pit



# INFRASTRUCTURE



GP office



Crematorium



Roads



# TRANSACT WALK

- The transaction walk is a group exercise which explores environmental and social resources, conditions and systems by observing, looking, listening.







# LITERACY

As per GP record,

Percentage of male literacy-50%

Percentage of women literacy-36%

Total literate population-44%

Actually, this Village has less literate percentage.

Moreover most of the family is witnessing 1st

Generation of education. People are less concerned about education. By the way, GP and school teacher are doing their best to create awareness for education through Badi Bata program.



## 1. MGNREGS

Average Day of Employment= 63 ( in 2022)

Average wage rate=248( 272 in India)

Payment within 15 Days= It is done through Direct Benefit Transfer as it facilitates quick transfer without scope of misappropriation.

Key points about MGNREGS in this village-

- a. Under this program, BPL holders are given to set up own scope of pisciculture adjoining with irrigation pond/water tanks.
- b. There is no work for furtherance of agriculture as to focus on assets creation for Gram panchayat
- c. There are 357 job card holders under MGNREGA.



# WITNESS TO POND LEASED TO INDIVIDUAL FARMER FOR PISCICULTURE





## 2. TELANGANA KU HARITHA HAARAM

- Total saplings planted in the Betturpally- 5010(2023-24),2350(2022-23)
- Survival percentage-94.5%
- Household plants- 6 (plants)\*377(houses)=2262
- Impact-
  - a) Enhancement in percentage of green cover of Betturpally
  - b) Accountability of officials of Gram Panchayat has been increased for the sake of denizens of village.

Issue raised-

- a) No participation of villagers at ground level due to lack of awareness
- b) There are certain types of saplings which were planted.

# SUGGESTION:

To encourage and aware people about salubrious effects of trees and greenery environment

A white downward-pointing arrow with a slight shadow, indicating a flow from the first suggestion to the second.

To promote plantation of deciduous species of plants so as to maintain their durability even during dry season.

A white downward-pointing arrow with a slight shadow, indicating a flow from the second suggestion to the third.

To look after health of already planted trees



# WITNESS TO IMPLEMENTATION





### 3. MISSION BHAGEERATHA

- Coverage- 100%
- Quantity of water provided- generally good but it gives non drinkable water. especially during rainy seasons and brokage in pipeline.

Impact-

- a) Actually, it has alleviated the water crisis in this village.
- b) It has soothed the life style of villager as they have not to struggle for the water tanks for their turn.
- c) It has reduced the latency of schedule of general people.





## ISSUES-

- Due to lack of awareness, they are still going outside to collect drinking water from the open streams.
- For more water security, they are still likely to be dependant on borewell for multipurpose activity.

## SUGGESTION-

- To set up a device (TDS meter) to check up the purity of water around habitation will help mitigate the disease which are prone to happen due to impure water like diarrhoea.

## 4. SWACHCH BHARAT MISSION(RURAL)

- Status of village- ODF++ (ODF status in 2021)
- Coverage of Household Latrines= 189 families
- Overall sanitary status of village= good

Note: Cleaning workers take on account of cleaning on weekly basis.

The following steps are taken by this gram panchayat for redressal the problems arising from stagnant water-

- a) The sprinkling of bleaching powder is done on specific interval on the basis of requirement.
- b) The desilting is done by either through manual workers under MGNREGA or JCB machinery.



## SUGGESTION:

---

The frequency of cleaning stagnant water should be done more frequently as a number of cases has been reported about the fever cases infected through Dengue, Malaria etc.

---

As Desilting recharges the ground level water, the dredged materials should be used as to enhance productivity of somewhat barren/less productive lands.

---

Dustbin should be placed nearby public places like temples, GP office.



# SANITATION ACTIVITIES





# RYTHU BANDHU (INPUT SUBSIDY)

- Coverage- cent percent
- Impact

- a) Farmer need not to borrow at higher rate for furtherance of next harvest.
- b) The counter-productive result of previous season doesn't be hurdle for farmers to grow for further season. It is like silver lining in Cloud.

## Issue raised-

- a) The higher ownership of land attracts profound input subsidy.
- b) The farmers get input subsidy whether they cultivate or not as input subsidy doesn't depend upon farming and there is no surveillance.



## PHC

- As there is neither health sub center nor professional medical practitioner. This village is facilitated by 2 ASHA and 2 ANM.
- Nearest PHC established in 1998, is in Bheemini mandal which is around 1 km from GP office. Some key facilities are provided by this PHC as follows-
  - a) Average patient visited- 90
  - b) Types of services available- Delivery, sample checkups (blood, Urine), minor operation, non contagious disease, Rabies, Snake bite etc.
  - c) Impact- Basic amenities for villagers are some distance which is convenient to access in dire need.



# REVELATION (HEALTH)

- a) There are 6 leprosy cases in GP.
- b) 1 Ambulance called here "Amma Odi" arrives in 10-15 minutes after calling up 102.
- c) All batches of vaccination of child is done here after birth.

## Issue raised-

- a) There are two posts for doctors, but only one doctor is posted.
- b) There are other vacant seats for nurses and lab technician.

## Suggestion-

- a) As medical sector is emergency sector, the vacant seats should be filled at the earliest.

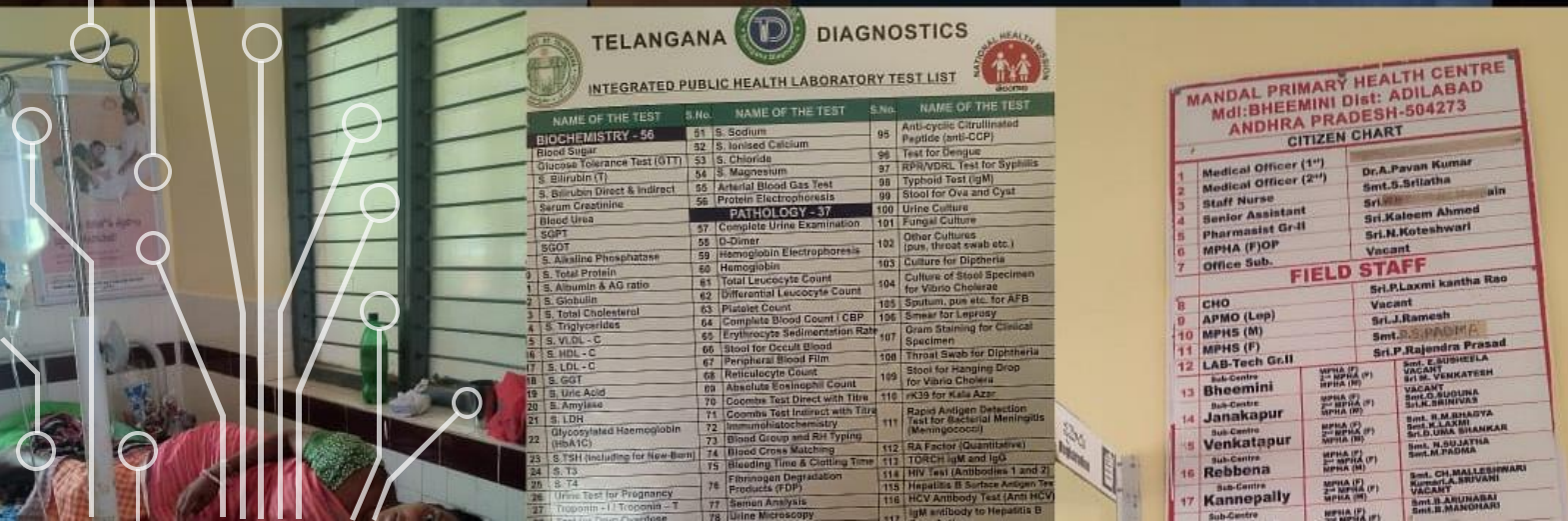


## • SUGGESTION (HEALTH)

a) As medical field is an emergency sector, the vacant seats should be filled.

b) there should be drive for general awareness with the help of NGOs for better lifestyle in compliance with doctor like "learn with doctor".

c) There should be increase in number of beds which are now only 4.





# ANGANWADI CENTER

## • Enrolment-

	Bitturpally (M+F)	Rampur (M+F)	Rajaram & Pedagudipetta (M+F)
Pregnant	0+4	0+3	0+4
Child (0-6)	1+0	1+0	3+2
6m- 1yr	0+5	3+2	4+4
1-3 yr	7+8	7+4	7+5
3-7 yr	8+7	12+11	6+12



17/10/2023 16:16



17/10/2023 12:29



# INTEGRATED CHILD DEVELOPMENT SCHEME

- For the lactating women, 200ml of milk for 25 days a month and one egg each day will be given with meal.
- Children aged between 7 months and 3 years are provided with 16 eggs a month in addition to a 2.5 kg food packet.
- For children aged b/w 3-6 years, one egg a day in addition to rice, dal, vegetables and snacks is supplied.
- Above all facilities are provided under **Arogya Lakshmi scheme** of Telangana state.
- Children b/w 3-6 years are trained for play cum learning with foundation literacy.
- Attendance-
- In order to bring attendance at 100%, govt. has provided good food and recreation for children to have physical and mental health.

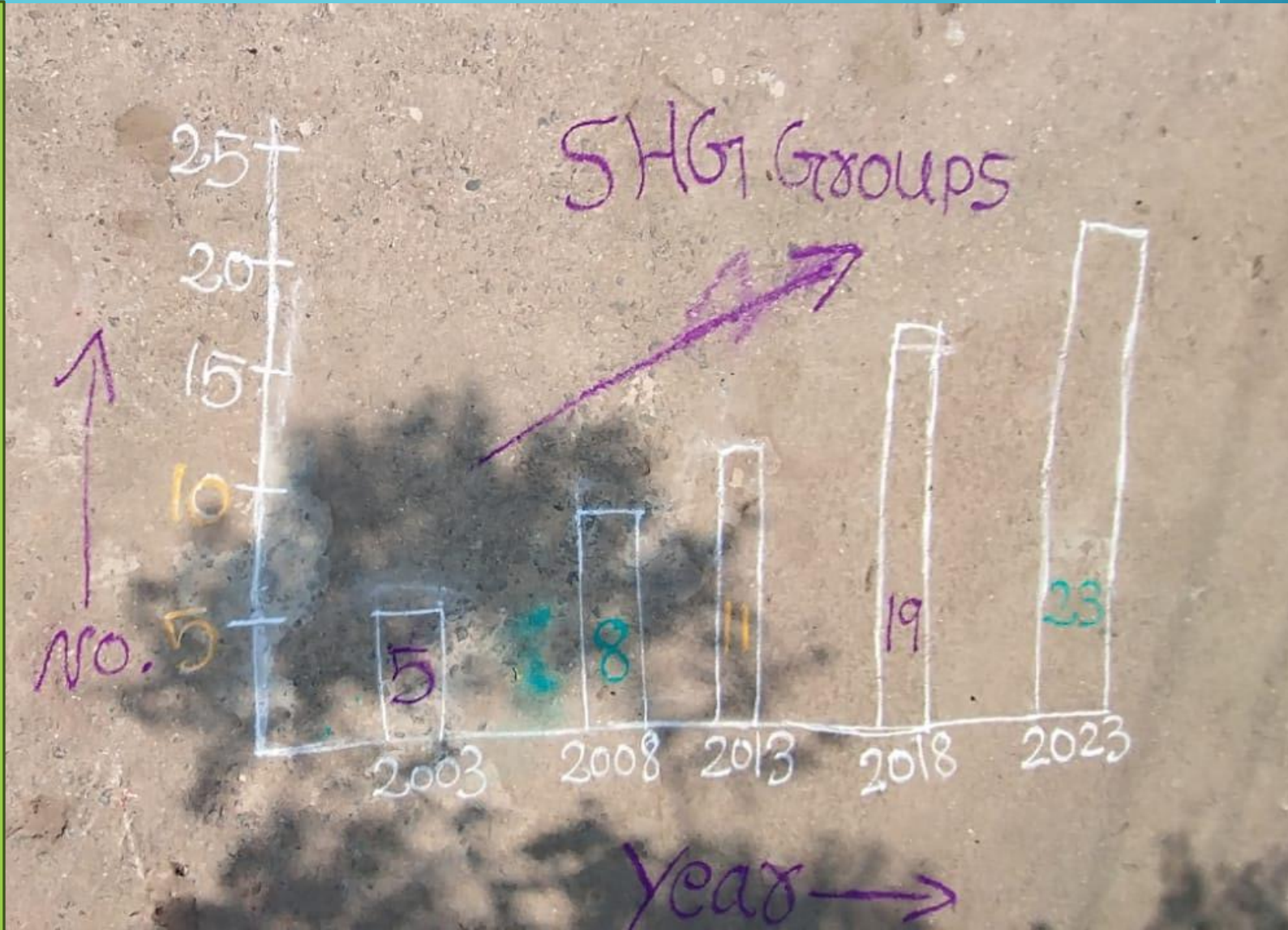
# WOMEN SHG

- Coverage- In 2003, SHG initiatives were taken. Since then, the Number of SHGs groups has been increased to 23 helping hundreds of family to transform their status to a dignified level.
- Activities- Women make group of at least 10 members who contribute at least 100 Rs/- per month. In turn, This accumulates as a collateral which fosters banks to provide loans for community basis at 12%. It is worth mentioning that the state government subsidies 6% for defraying of loan.
- Impact- Impoverished women take loan to set up entrepreneurship at basic level which subsequently turn up for bigger investment.
- They are living dignified level as to have financial independence.



# GROWTH IN NO. OF SHG FROM 2003

The continuous increase in the number of SHG group signifies not only the proliferation of numbers but also the enhancement of hope and sanguine perspective to have a standardized and dignified life of allied members. It has turned up a tool to transform life with successive growth.





# MEETING WITH SHG





## CASE STUDY

- Here is a story of SC caste woman wherein she described her journey from financial dependence to independence. She took loan from SHG, she bought one Pico and sewing machine. Now she stitches attires and sells them in market which in turn becomes source of sustenance. Hence, she also assists her husband financially in running house. Now her family is living dignified life. Her children are going to school with a hope to be great man in the future. Let's watch this transformation in telugu language.





# PDS RATION SHOP

- Coverage- As the around 99% families are Below Poverty Line, the access is cent percent.
- Timeliness- During second week of every month ( from 9th to 19th). As the dealer gets the stock in 1st week of every month.
- Impact-
  - a) It has reduced starvation among villagers.
  - b) It has also pacified the child stunting, malnutrition cases.

## Issue raised-

- a) Only rice is distributed among BPL families. Insufficiency of other cereals like pulses, grams, wheats contributes for imbalance diet.

# MISSION KAKATIYA

- It has fostered ryot to have canal based irrigation.
- Restoration capacity-
- Extent of Ayacut established- 2000-3000 acre

A celebrated example of this scheme in this village is Rampur Project which was launched in 2001.

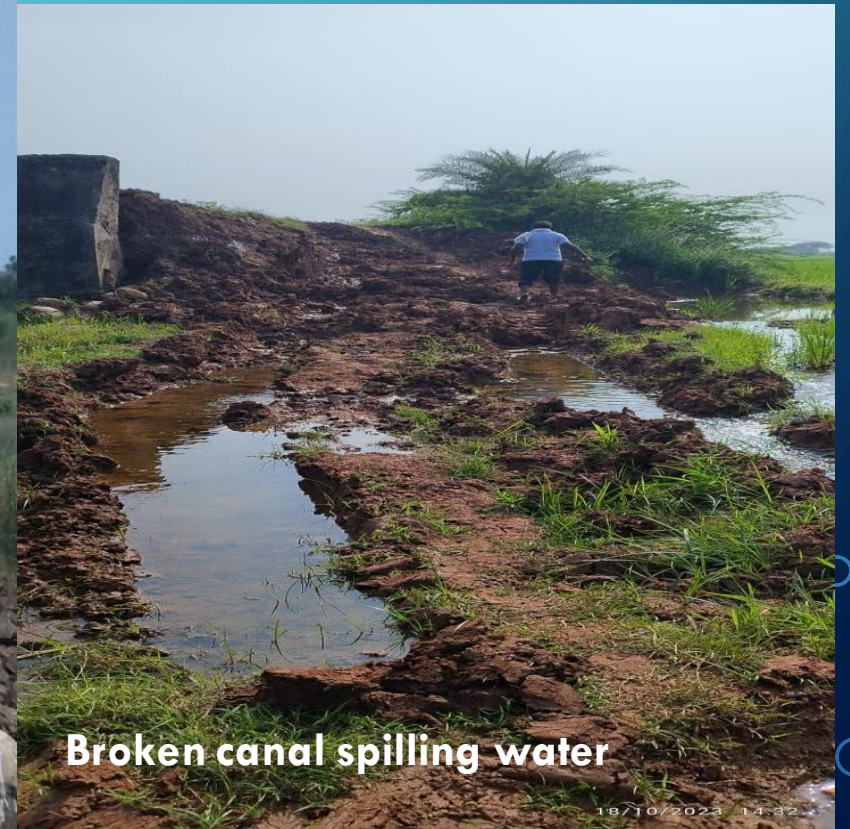
Some salient features of this project are as follows-

- a) It is stretched in around 3500 acres.
- b) It has fostered canal based irrigation.
- c) It has been catalyzed under LIFE (Life style for Environment).
- d) A fisheries society of 40 families having livelihood of pisciculture depends on this project.



# ISSUE RAISED

- The interlinked canal has dilapidated due to non-maintenance of structure at periodic level. In turn, It spills out water in habitation area which cause stagnant water, unbearable effect on living condition.





# **PALLE PRAGATHI VANAALU**

- **Coverage- No. Of parks=3**

- **It was introduced in 2018.**

- **Impact-**

**a) Although in village people have space to sit, they have not standardized place for entertainment and exercise.**

**b) It has improved the quality of life in rural areas by undertaking a wide range of development activities, including infrastructure development, sanitation and social welfare.**







# RYTHU VEDIKA

- Status- having 2 rooms and 2 toilet (1 working) with a plinth area of 2046 sqft
- Use- Building established in 2021 has facilitated farmers a standardized place to put across imminent challenges for the expedient solution of problems at community level.
- Impact-
  - a) Farmers deem this structure as their own at community level.
  - b) They come to this place in any difficulty to consult Agriculture officer.
  - c) This place is like a school for farmers as here they are taught about sustainable agriculture and way to enhance profit from harvest.



# RYTHU VEDIKA OF BETTURPALLY



# PENSION(OLD AGE/WIDOW)

- Coverage- 100%
- Impact-
  - a) The allotted sum (2000 Rs.) has somehow supported beneficiary to bear the sustenance of their cumbersome life.
  - b) It has also helped them to buy necessary medicine. Now they have not to flounder for accessing the services they want.



# AASARA PENSION SCHEME

It is a pension scheme by the govt. Of telangana. It is a welfare scheme of pensions to old people, widows, Goud community, elephantiasis patients, AIDS afflicted people, physically disabled and beedi workers.

the Disabled get 4016 whereas others get 2016 Rs per month.

In betturpally GP, the data of beneficiaries are as follows-

Total beneficiaries-156

OAP-70

widow-51

disabled-23

Toddy tappers-11

FA to single women-1

Beedi worker-0



**Interaction with AASARA beneficiaries**



# KALYANA LAKSHMI

- Coverage- As Every marriage is registered. Hence, Every marriage gets a certificate which paves the way to entitle the bride to make the most of this scheme to own 1 000 1 6 Rs/-.
- Impacts-
  - a) It has reduced the possibility of child marriage.
  - b) It has been catalyst for girl education which is mentioned in 4th goal of SDG.
  - c) It has pacified the financial burden of bride's family.

# RAITHU BIMA

- Coverage- 99%
- Claims segregation year wise

Total claims year wise in Betturpally	Number of claims
2020	3
2021	4
2022	3
2023	1



# SCHOOL (EDUCATION)

Actually in betturpally, primary school upto 5th class is situated.

Enrolment-

Class (B+G)	SC (B+G)	BC (B+G)	Total
I	1+2	0+1	1+3
II	1+1	1+0	2+1
III	2+2	0+1	2+3
IV	4+2	1+1	5+3
V	1+0	1+1	2+1
Total	9+7=16	3+4=7	12+11=23

# YEAR WISE STRENGTH

Year	2019-20	2020-21	2021-22	2022-23
No.	24	22	38	35





# ATTENDANCE- 96%

- Established in 1965
- The some features of this school are as follows-
  - a) Attendance is done through face recognition with an aid of DSE-FRS of telangana government.
  - b) The encouragement of admission of children is done through Badi-Bada program.

## Issue raised-

- a) The condition of school toilet is not good, it needs renovation.
- b) The building of school is in dilapidated stage. The rain drops trip over roof.

# LEARNING LEVEL

- Here medium of school learning are English and Telugu languages.



Awareness for education



# VAIKUNTHA DHAAMAM

- Status- built in 2021 in 0.5 acre
- Renovation- done on specific interval
- Electric cremation- No availability
- Quantity of water nearby- as there is no river or pond nearby. Water demand is supplied through tap under bhagiratha scheme of which water quality is good.

Issue raised-

- a) Here people are more inclined to do last rites in own private land. Therefore, cemetery is rarely used.



# CREMATORIUM OF BETTURPALLY





# SCHEMES WHICH ARE NOT INTRODUCED HERE

- Prime minister krishi sichai yojana(PMKSY)
- Dalit bandhu
- Soil Health card Scheme
- Prime minister awas yojana (rural)
- Sheep Rearing Scheme

# POLICE STATION

- The records of CCTV cameras located at corner is monitored on decentralised level.
- In 2 years, there are 67 crimes cases in which 20 preventive cases, 24 unnatural death are included.
- Murder/suicide case in last 2 years=10

Issue raised-

- a) In these cameras, the data can be saved for past 20 days only.
- b) Dominant personality of police rather than friendly one hinders people from registering FIR even in serious cases.



# PANCHAYAT RAJ INSTITUTION

## Gram sabha

- Meeting in every 2 month

## Gram panchayat

- Meeting in every month

# GRAM SABHA MEETINGS

- In september 2023, the awareness program for active participation of voters in election was conducted under SVEEP(Systematic Voter's Education and Electoral Participation program) of election commission of India.
- Issue raised-
  - a) There is lack of digital infrastructure at GP level.
  - b) In meeting, there is no any resolution/lack of planning for near future for furtherance of sustainable and egalitarian future.
  - c) There is merely NGOs participation with GP to create awareness about various issues.



# GP OFFICE





# AWARENESS FOR VOTING THROUGH SVEEP





[illegible]



# WASTE SEGREGATION

- Dry waste collection= 39.5kg/month
- Wet waste collection=280kg/45 days

The salient feature of waste segregation site is as follows

- a) The wet waste are used as manure in GP trees, household trees and also avail to farmers at free of cost.
- b) The processed dry waste is sold at 10Rs/kg which is revenue income for GP.

Issue raised-

- a) There is no proper segregation of e-waste, medical waste and single use plastic
- b) There is lack of awareness among villagers to motivate them for segregation of dry and wet waste by using blue and green dustbins.

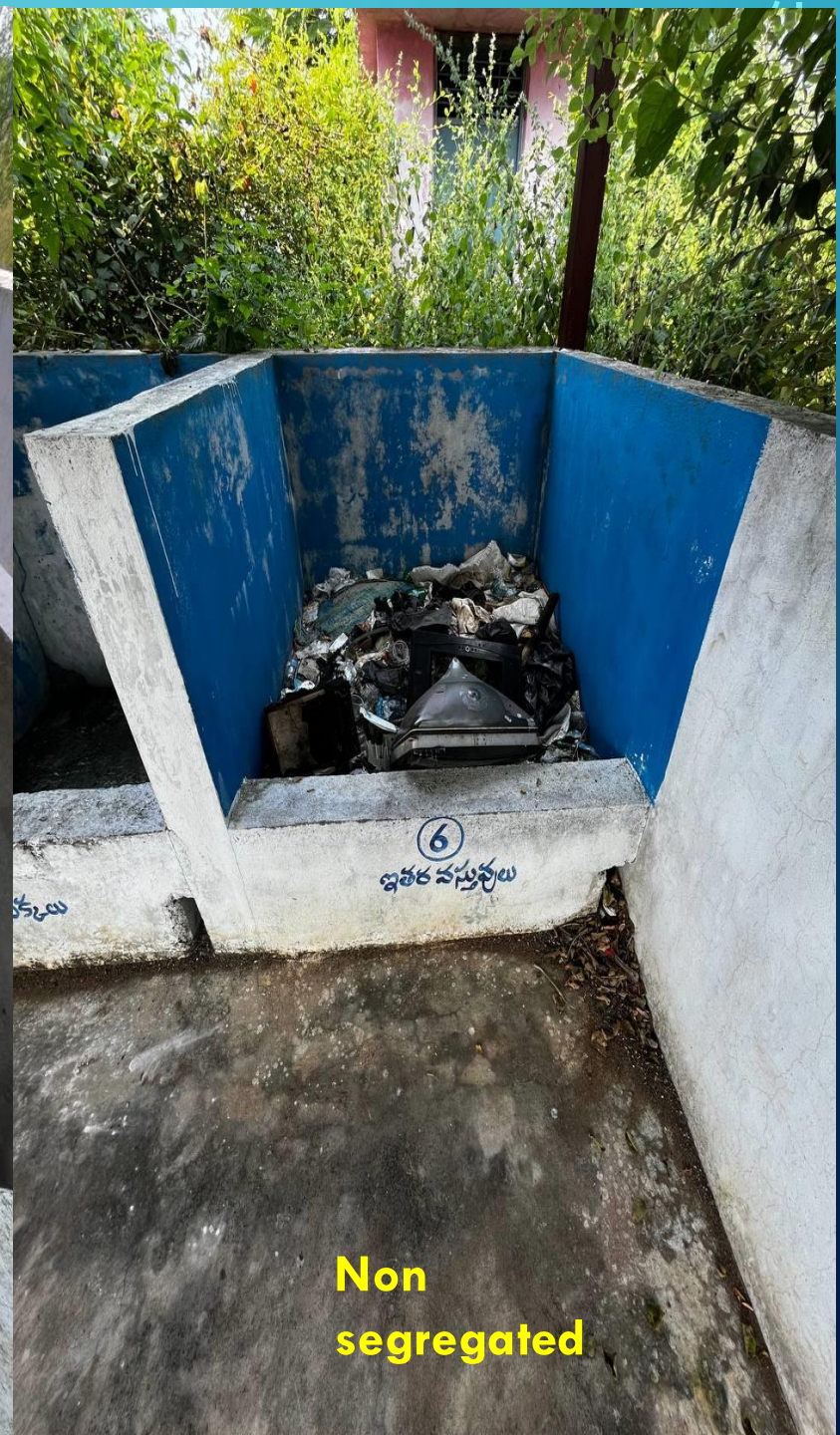




**Platform for  
drying manure**



**Manure  
processed**



**Non  
segregated**



# AGRICULTURE

- Major crops in decreasing order of production-

Cotton>Paddy>Palm Oil> Red gram

Cotton:

Per acre production-8 quint.

Area of land in cotton harvest-3417 acre

Annual production-27336 quint.

Palm oil-

Area- 55 acre

In first 4 yrs of cycle, intercropping is used to get some sustenance. After that, it starts generating revenue. Farmers claim that this has cent percent profit business. Moreover, its cost still relies on the sensex.





# AGRICULTURE

- Drying platform under NReGS are also made with the subsidy of government. Nearly 10 farmers have made the most of it. This low number shows either low keen interest or subsidy aberration.
- In rythu vedika, farmers are taught about various sustainable agriculture on every tuesday and friday. On 6 oct, they are taught about the Nano urea technology.
- Soil- Here it is mixture of Red soil (80%) and Black soil(20%).







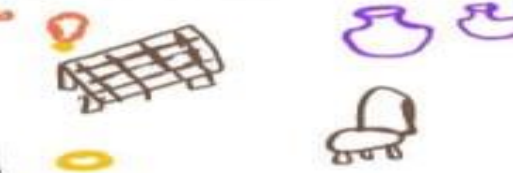



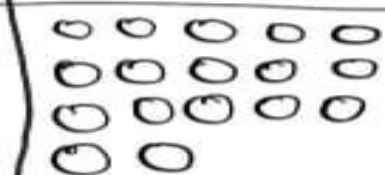


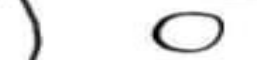
# CAUSES OF POVERTY- PREFERENCE RANKING

Causes	A	B	C	D	E	Points	Rank
Landless	1	2	1	1	1	6	1
Liquors	2	5	4	6	6	23	5
Low wages	6	3	3	4	2	18	3
Ignorance of scheme	5	4	6	5	5	25	6
Illiteracy	3	1	2	2	3	11	2
Indebtedness	4	6	5	3	4	22	4



# WEALTH RANKING

## BETTURPALLY VILLAGE

Socio-Economic Group	Assets	No. of households 0 → 5 households
Group 1 - Land > 10 acres 		
Group 2 - 5 < Land < 10 acres 		
Group 3 - 1 < Land < 5 acres 		
Group 4 - Land < 1 acre 		

# DE BRIEFING AT DC OFFICE



**Thank You**