



Village Visit – Group 13

Noothpally Village

Name of Officer Trainees :

CHIRANJEEV JAIN, IFS

VENKATESH PONNA, IRPS

RAKESH SAHOO, IRTS

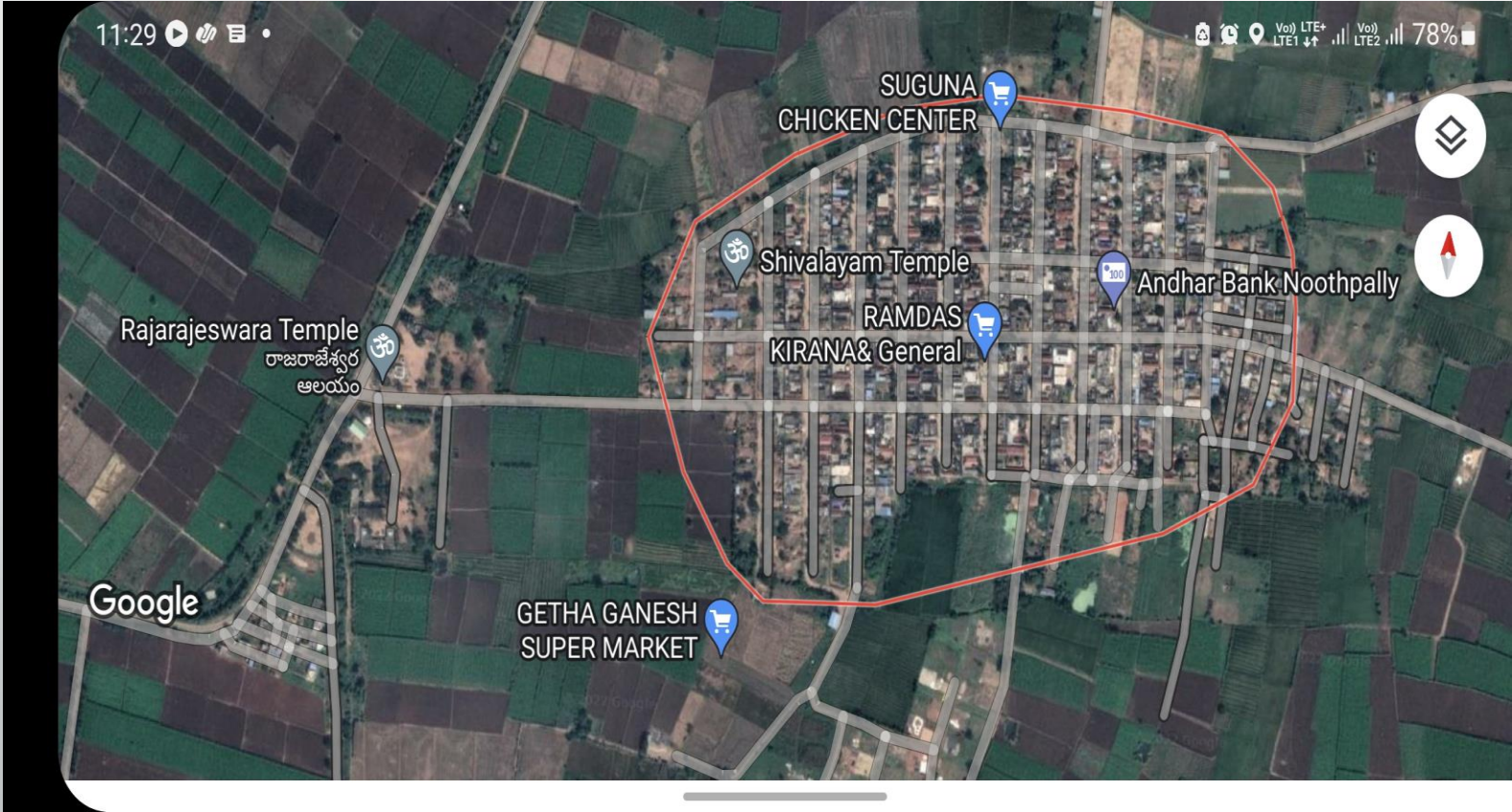
RISHI RAGHAV, IRTS

BRIJESH UPADHAYA, IPS

Modern Timeline:

- 1940s: Cheruvu Pond constructed
- 1970s: SRSP Kakatiya Canal & Laxmi Canal were opened/operationalized
 - 1980s: Primary School constructed & started
 - 1989: PHC sub-centre started
 - Late 1990s: Turmeric production started
 - 2002: Anganwadi started
- 2003: Society for Elimination of Rural Poverty (SERP) extended to Nizamabad district
 - 2011: StreeNidhi Mahila Bank

Bird's eye View



Transect Walk



Institutions

				Whether the Land details are entered in Revenue Records / GP Records / Municipal Records
	Name of the Institution	Survey Number	Extent (In Square Yards)	
4	5	6	7	8
1	Gram Panchayat	413/5	180	Revenue record
2	Post Office	413/2	27	Revenue record
3	ZPHS School	406/u	484	Revenue record
4	Anganwadi	413/3	67.5	Revenue record
5	Health Sub Centre	3-8/5	67.5	Gp Record
6	Nursary	398/2	4840	Revenue record
7	OHSR (5)	aabadi	0.35	Revenue record
8	Dump yard	415/1a	200	Revenue record
9	Crimitoria	415/1a	600	Revenue record
10	Compost Shade	415/1a	22	Revenue record

General Observation from the transect walk

Caste based segregation

Wealth Inequality

Separate community halls and Temples for each community

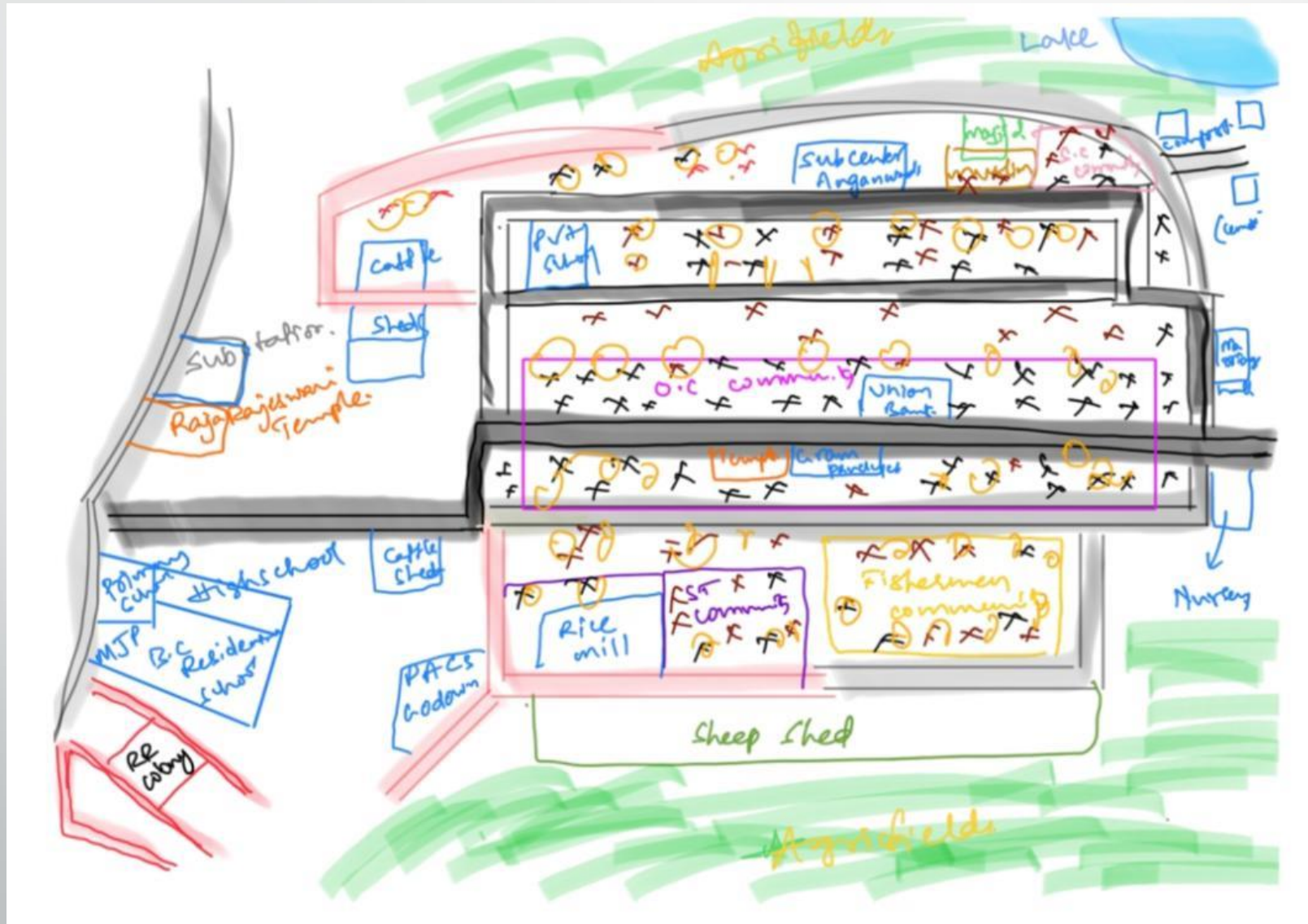
Anganwadi centres located in one direction

Better irrigation facilities and 24*7 electricity to the farmers

Lack of proper primary health care centre and dependence on Registered medical practitioner & Sub-Centre

Inadequate School Infrastructure- Dormitories for residential school, Class rooms & lab facilities for Secondary School.

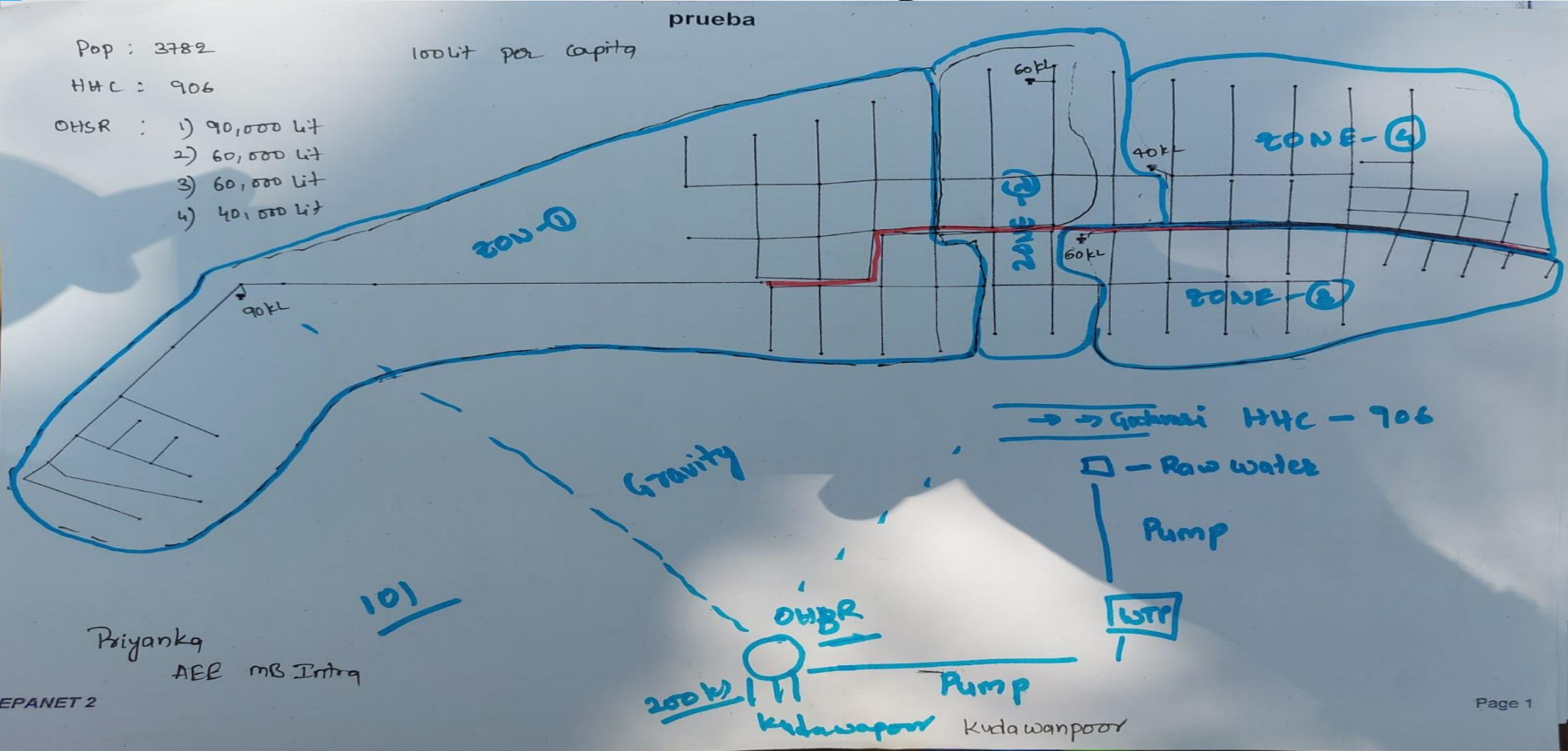
Social & Resource Map



Chapati Diagram



Mission Bhagiratha



Education



EDUCATION	
Govt Degree College	0
Govt Junior College	0
Govt Polytechnic College	0
No.of Primary Schools:	1
No. of Teachers	2
No.of Students enrolled	51
Drinking Water Facility	Yes
Separate Toilets facilities for Boys & Girls	Yes
No. of High Schools	1
No. of Teachers	6
No.of Students enrolled	32
Drinking Water Facility	Yes
Separate Toilets facilities for Boys & Girls	Yes
No.of KGBV (Girls)	0
Mahatma Jyothibapule Residential School - BCs (boys)	1
Mahatma Jyothibapule School - BCs	1

Mid May Meal vs Menu of Residential School



	MILKLET DRINK 7:15am to 7:30 am	BREAK FAST 9:05am to 9:35am	LUNCH 1:30pm to 2:30pm	SNACKS 4:30pm to 4:45pm	SUPPER 6:15pm to 7:00pm
MONDAY	1. SPOURTS. 2. RAGI JAVA WITH JAGGERY	1. UPMA (KURNOOL RAVVA/ TODDAY RAVVA) WITH CHUTNEY	1. RICE 2. LEAFY DAL 3. VEG CURRY 4. EGG 5. RASAM 6. CURD	SEIYA/ Ragi Millet Mixluto	1. RICE 2. VEGETABLE DORY. 3. CHUTNEY WITH CHEE 4. RASAM WITH VEGETABLE PIECE 5. BUTTER MILK 6. SEASONAL FRUIT
TUESDAY	1. SPOURTS. 2. RAGI JAVA WITH JAGGERY	1. PULIHORA WITH RASAM	1. RICE 2. DALL WITH TOMATO 3. VEG CURRY 4. EGG 5. RASAM 6. CURD	BOILED SHENAGALU	1. RICE 2. VEGETABLE DORY 3. CHUTNEY 4. RASAM WITH VEGETABLE PIECE 5. BUTTER MILK 6. SEASONAL FRUIT
WEDNES DAY	1. SPOURTS. 2. RAGI JAVA WITH JAGGERY	1. KICHIDI WITH RAITHA/SAMBAR	1. RASAM RICE 2. WHITE RICE 3. BUTTER CHICKEN CURRY 4. CURRY 5. TOMATO DAL 6. VEG FRY 7. SAMBAR	CARROT HALWA	1. RICE 2. TOMATO CURRY 3. CHUTNEY 4. RASAM 5. BUTTER MILK 6. SEASONAL FRUIT
THURS DAY	1. SPOURTS. 2. RAGI JAVA WITH JAGGERY	1. IDLY WITH CHUTNEY/SAMBAR	1. RICE 2. LEAFY DAL 3. VEG CURRY 4. EGG 5. RASAM 6. CURD	MILLET COOKIES	1. RICE 2. VEGETABLE DORY 3. CHUTNEY 4. RASAM WITH VEGETABLE PIECE 5. BUTTER MILK 6. SEASONAL FRUIT
FRIDAY	1. SPOURTS. 2. RAGI JAVA WITH JAGGERY	1. ZEERA RICE/TOMATO RICE/ EGG FRIED RICE WITH RASAM	1. RICE 2. TOMATO DAL 3. VEG CURRY 4. EGG 5. RASAM 6. CURD	BOILED PESARU	1. RICE 2. VEGETABLE DORY 3. CHUTNEY 4. RASAM WITH VEGETABLE PIECES 5. BUTTER MILK 6. SEASONAL FRUIT
SATURDAY	1. SPOURTS. 2. RAGI JAVA WITH JAGGERY	1. RICE PONGAL WITH SAMBAR	1. VEG. FRIED RICE 2. DALL WITH TOMATO CURRY 3. VEG CURRY 4. EGG 5. SAMBAR 6. CURD	ONION PAKODA	1. RICE 2. VEGETABLE DORY 3. CHUTNEY 4. RASAM 5. BUTTER MILK 6. SEASONAL FRUIT
SUNDAY	1. SPOURTS. 2. RAGI JAVA WITH JAGGERY	1. POORI/CHAPATHI WITH ALU TOMATO CURRY/DAL TOMATO CURRY	1. RASAM RICE 2. WHITE RICE 3. BUTTER CHICKEN CURRY 4. EGG 5. TOMATO DAL 6. VEG FRY 7. SAMBAR 8. VEGETARIAN 9. CURD	1. MILLET CHIKKI MADE IN HOTEL 2. BOILED MILLET 3. CHUTNEY 4. RASAM 5. BUTTER MILK 6. SEASONAL FRUIT	1. RICE 2. VEGETABLE DORY 3. CHUTNEY 4. RASAM WITH VEGETABLE PIECE 5. BUTTER MILK 6. SEASONAL FRUIT

The Difference



Health

5	No.of Anganwadi Centres.	3	
	No.of Anganwadi Wadi workers	3	
	Childrens Enroled	24	

Sl.No	Subject	No's
	1 year – 3 years Child enrolled	87
	3 years – 6 years Child enrolled	34
	No.of Adela Cent Girls	125
	No.of Malnutrition Children	5
	No.of Pregnant women delivered	2
	Lactating women Registered	24

8	COMMUNITY HEALTH CENTRE	
	PHC ATTACHED	1
	No.of Pregnant Women	45
	No.of High Risk cases	22
	No.of TB patients	2
	HIV CASES	0
	No.of Leprosy patients	0
	No.of immunization children.	44
	No.of ctract cases	9

Sub-Centre & Anganwadis



Poverty Alleviation Measures

1. Aasra pensions
2. 2bhk scheme
3. MNERGS
4. Shaadi Mubarak/Kalyan Lakshmi scheme

12	Pension		
	Old Age	111	
	Widow	105	
	Disabled	38	
	Weavers	0	
	Toddy Toppers	4	
	FA to Single Women	25	
	Beedei workers	259	
	HIV	0	
	TOTAL PENSIONERS	542	



Poverty Alleviation Measures

7	MGNREGS		
	No.of Job cards	666	
	No.of active Job cards	524	
	No.of works	904	

10	Kalyana Lakshmi-2021-22		
	BC	11	
	SC	1	
	ST	2	
	EBC	3	
	Shadi Mubarak	5	
	TOTAL	22	

People's Participation

Gram sabha Meeting and household surveys

Preparation of Resource Map and Social Map

Interaction with people at institutions like PHC, Schools etc.



SHG Groups

16	IKP		
	No.of SHG Groups	45	
	Percentage of households in SHGs	98%	
	Bank linkage through SHGs	42	
	Percentage of SHGs linked to Bank credit	93.33%	
	Any defaulting SHGs	1	

Meeting with SHG Members



Swachh Bharat Mission



Compost, Bio-compost & Vaikuntha Dhamam



Palle Pragathi Vanam- Plantation



Agriculture



Marampally Lift Irrigation Scheme



Horticulture and Animal Husbandry

17	Horticulture:		
	Drip (No.of farmers)	710	624.032 (area in hectars)
	Sprinkler(No.of farmers)	5	5 (area in Hectars)
	Poly House	0	
	Permanent Pendals	0	
18	Veternary and Animal Husbandry department		
	Milch Animals	17	
	Sheep & Goats	2382 & 453	
	Buffaloes	736	
	Cattles	107	

Awareness Generation during women's day celebration



Women's Day Celebrations -
~~~~~

MJPTBCWRS (BOYS), NODHPal

## \* Drawing Competition:

1. P. Srinith - 10<sup>th</sup> B - First prize
2. G. Srinik - 10<sup>th</sup> A - 2<sup>nd</sup> prize
3. P. Vishnu - 6<sup>th</sup> B - 3<sup>rd</sup> prize.
4. M. Limbadri - 6<sup>th</sup> B - (Consolation) prize -

## \* Essay writing competition:

1. M. Vishwanath - 8<sup>th</sup> A - 1<sup>st</sup> prize
2. U. Aakash Goud - 10<sup>th</sup> B - 2<sup>nd</sup> prize.
3. T. Baluteja - 8<sup>th</sup> A - 3<sup>rd</sup> prize.
- Consolation prize:
4. K. Rohith - 10<sup>th</sup> B.







Women Empowerment and Power



\*We should respect the women and encourage them then only they will achieve their goals.



Art by :-  
P. Prithi  
10<sup>th</sup> 'B' 31

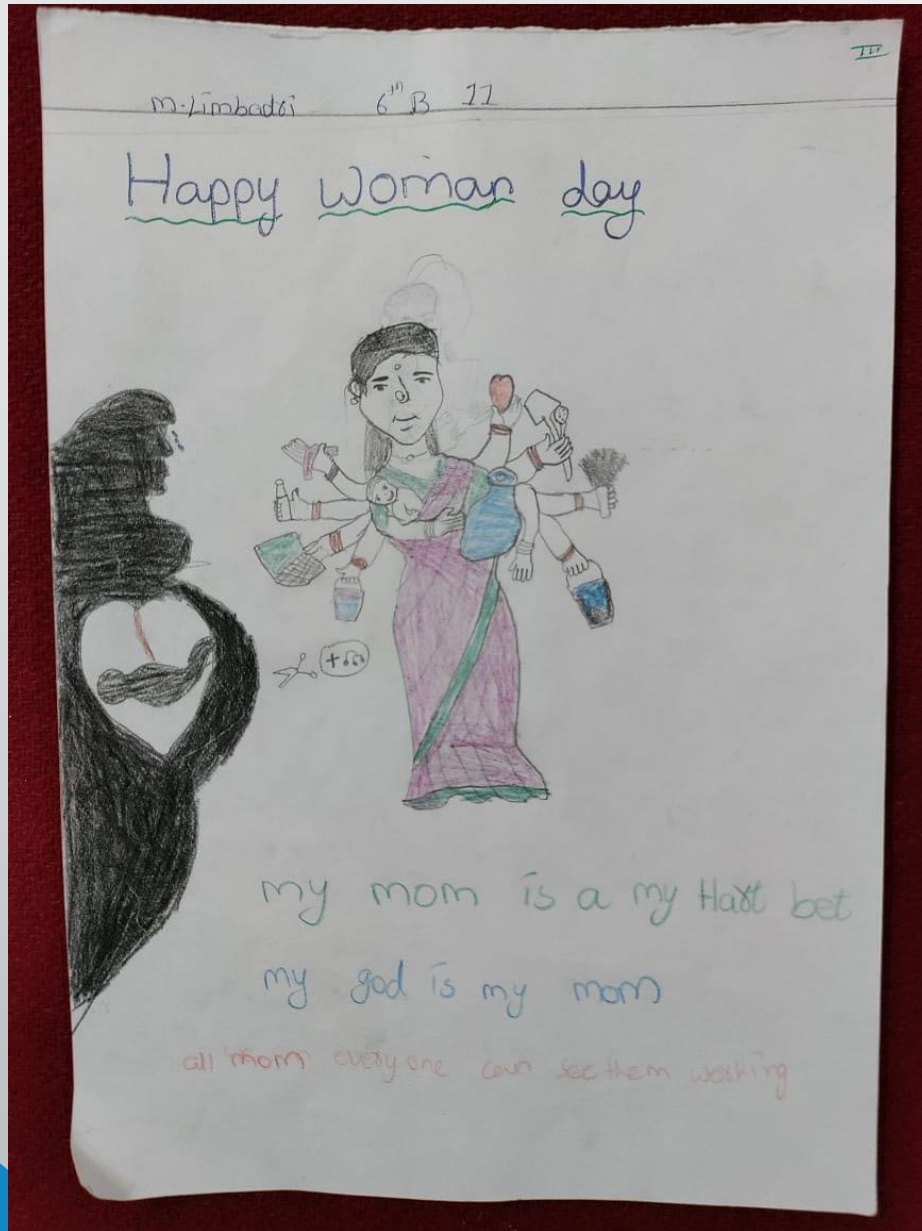


G. Sanyal 10<sup>th</sup> A

\* Respect the Girls

\* Let her fly She is not your slave.







# SRSP DAM



# Ankapur – A Model Village



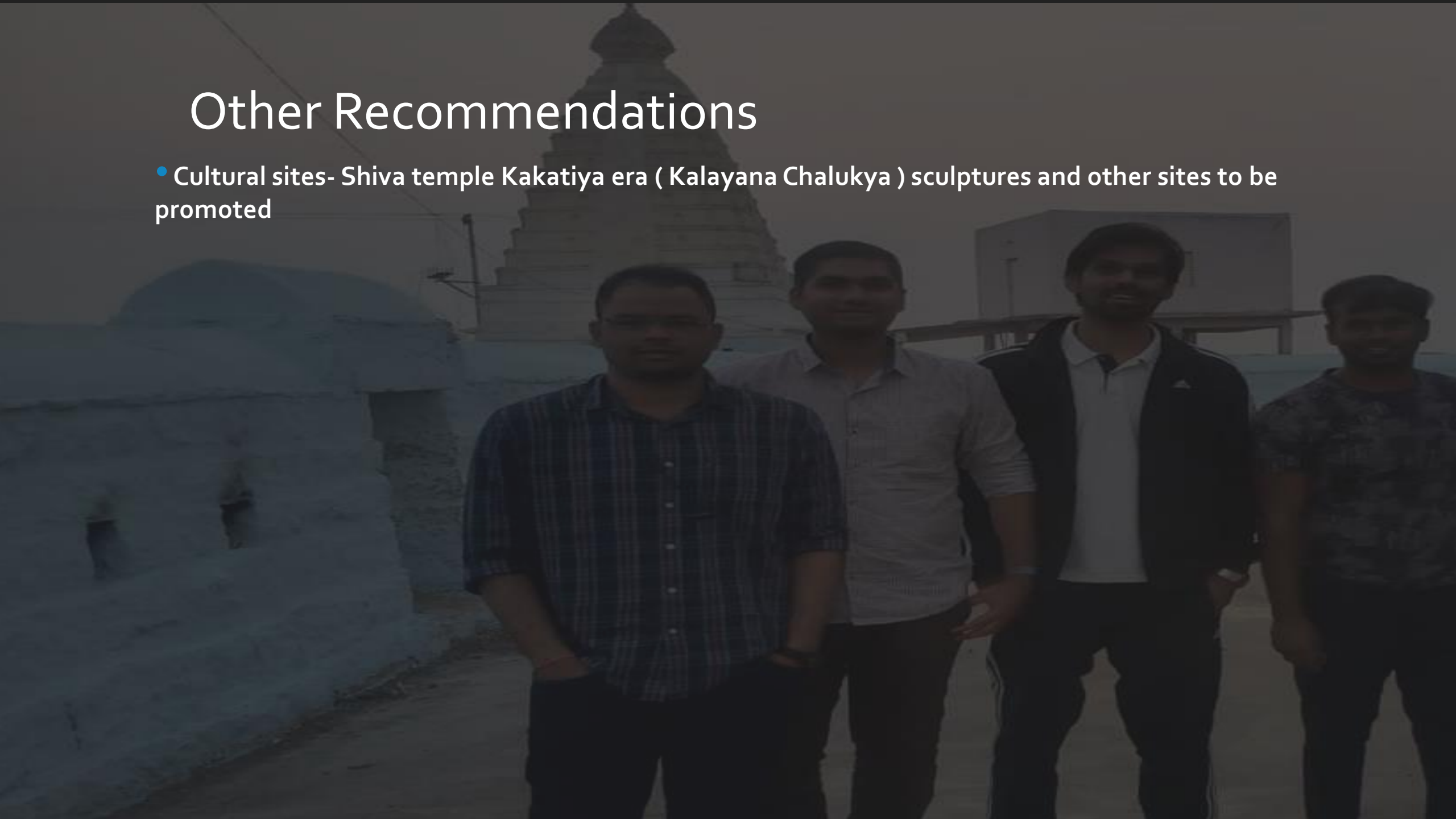


# Suggestions

- 1. Community Dry Platforms For Drying Agricultural Products**
- 2. Fish Dry Platforms**
- 3. Community Toilets**
- 4. Village Haat (Market)**
- 5. Greenery In Private Places**
- 6. School Infrastructure- Classrooms, Dormitories, Lab facilities, Digital Infrastructure**
- 7. Entrepreneurial Skills to SHG members**
- 8. Community Toilets**

# Other Recommendations

- Cultural sites- Shiva temple Kakatiya era ( Kalayana Chalukya ) sculptures and other sites to be promoted





# 1000 years old scripture ( Kalyani Chalukyas)



Our Identity  
Our Wealth  
Need to Preserve





Thank You