

Village Visit Chakrapur

Group 30 - Sudarshan Jadhav, Ankit Sharma, Lalit Kumar Vimal, Kanika Sikriwal, Kajol Ajit Patil

Village Basics

- Located at Hyderabad – Bangalore Highway
- Mahbubnagar District
- Population – 1638 (Voters- 1212)
- Area- 1200 Acres (Agriculture) & 616 Acre (Forest)
- Sex Ratio 916 (national average : 940)
- ASHA -2, ANM - 1
- Upper Primary School, Anganwadi (2)
- Sewage Line & Water Supply

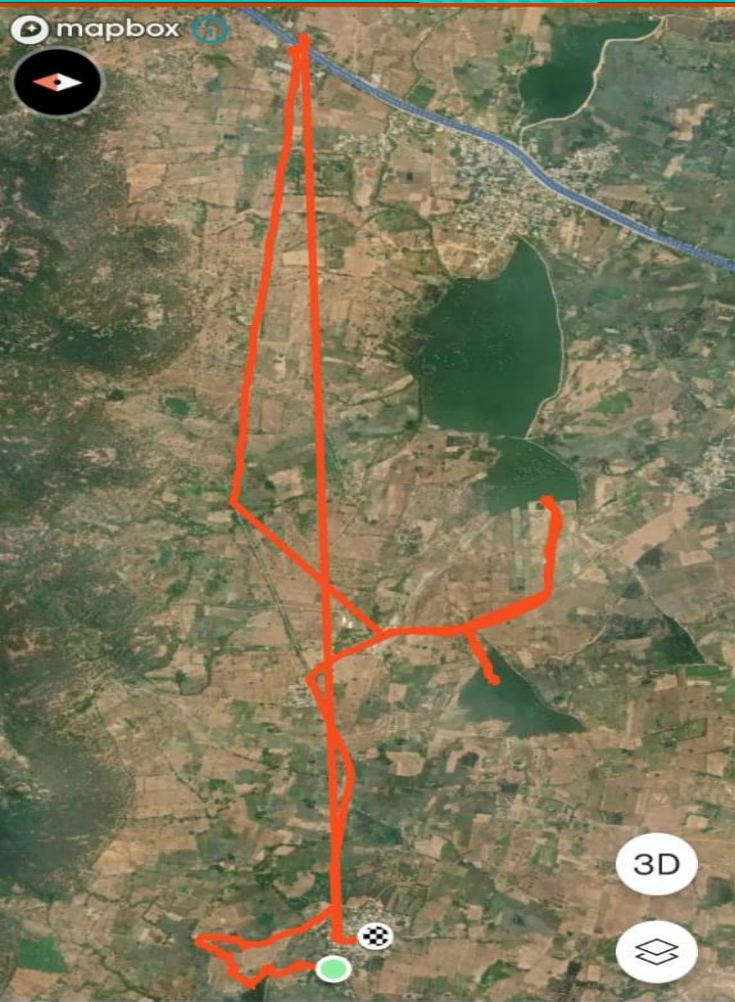
Population

| Overall | |
|--------------|------|
| Male | 855 |
| Female | 783 |
| Total | 1638 |
| | |
| SC Community | |
| Male | 283 |
| Female | 237 |
| Total | 520 |
| | |
| ST Community | |
| Male | 82 |
| Female | 73 |
| Total | 155 |
| | |
| BC Community | |
| Male | 485 |
| Female | 438 |
| Total | 923 |
| | |
| Others | |
| Male | 24 |
| Female | 16 |
| Total | 40 |

Timeline

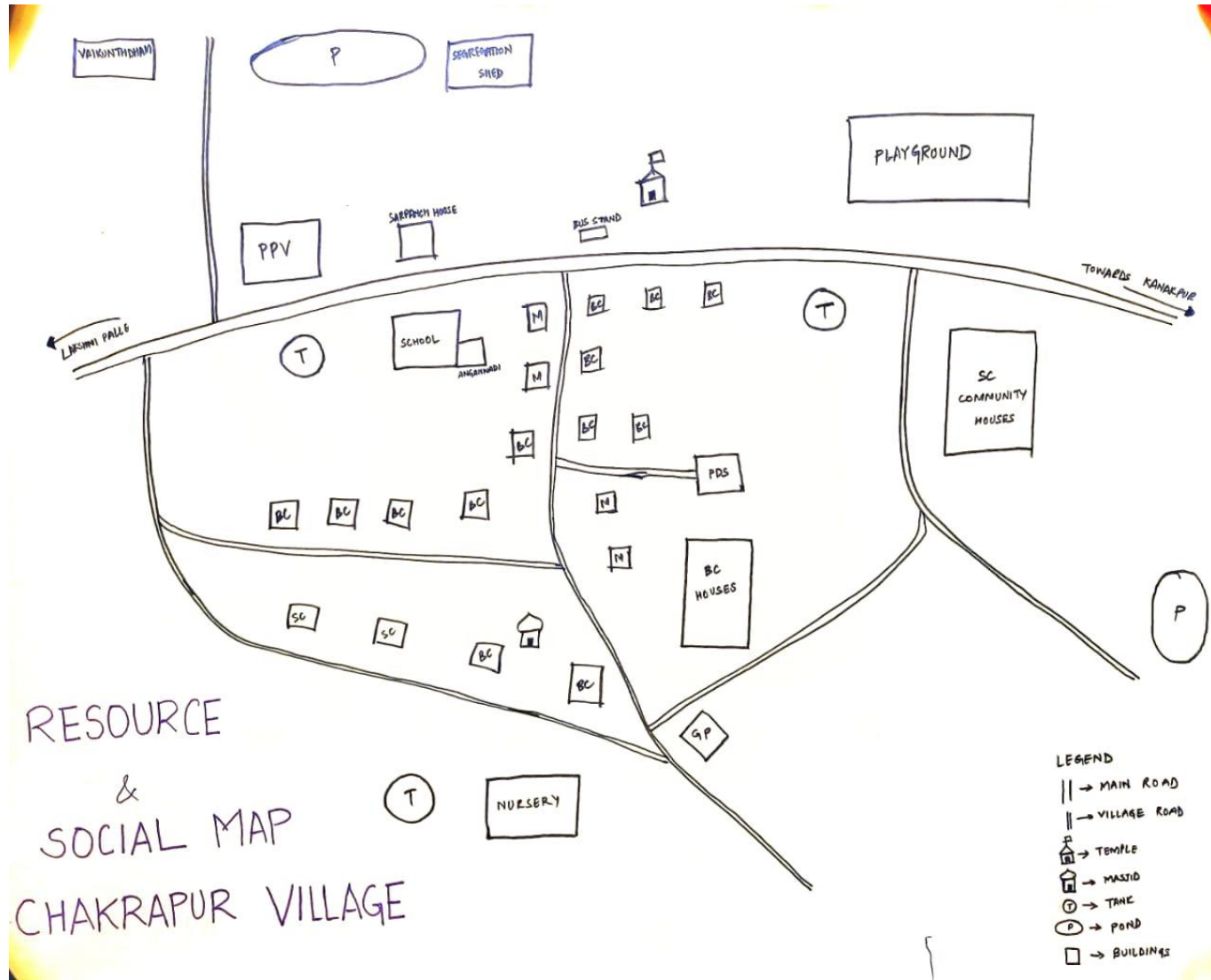
- 1948: Hyderabad liberated from Nizam's rule, Pallmetru district renamed Mahbubnagar
- 1983 : Chakrapur get electrified
- 1992s: Bore well installed near pond in Chakrapur
- 1995: Establishment of Chakrapur Gram panchayat
- 2000: BT roads built
- 2014: Mission Bhagirath commences
- 2017: 100% electrification achieved
- 2019: Waste collection started
- 2021: Pipes for drainage laid

General Observations about village



- Good Cleanliness
- Pucca Houses & New Construction underway
- Caste Based Segregation
- Drainage Work is ongoing
- Greenery was good

Transect Walk





Village Resource and Social Map Making

Visit

- Gram Panchayat
- School & Anganwadi
- PDS Shop
- SHG
- Nursery
- PPV
- Ponds
- Segregation Shed & Vaikunthdham





Gram Panchayat



జాతీయ ఉత్పత్తి పంపిణీ పథకం
చౌకధర దుకాణం-008
 గ్రామం: చౌకధర, మండలం: చౌకధర, జిల్లా: కర్నూలు

| క్ర.సం. | పేరు | వయస్సు | లింగం | తరగతి | పేరొందికం |
|---------|--------|--------|-------|-------|-----------|
| 1 | బిచ్చె | 55 | ♂ | 1 | 1000 |
| 2 | బిచ్చె | 55 | ♂ | 1 | 1000 |
| 3 | బిచ్చె | 55 | ♂ | 1 | 1000 |
| 4 | బిచ్చె | 55 | ♂ | 1 | 1000 |
| 5 | బిచ్చె | 55 | ♂ | 1 | 1000 |
| 6 | బిచ్చె | 55 | ♂ | 1 | 1000 |
| 7 | బిచ్చె | 55 | ♂ | 1 | 1000 |
| 8 | బిచ్చె | 55 | ♂ | 1 | 1000 |
| 9 | బిచ్చె | 55 | ♂ | 1 | 1000 |
| 10 | బిచ్చె | 55 | ♂ | 1 | 1000 |
| 11 | బిచ్చె | 55 | ♂ | 1 | 1000 |
| 12 | బిచ్చె | 55 | ♂ | 1 | 1000 |
| 13 | బిచ్చె | 55 | ♂ | 1 | 1000 |

PDS



Nursery



PPV



Pond



2022/03/08 11:15



Segregation Shed



Segregation Shed

Schemes

- Mission Bhagirathi – Tap Drinking Water
- Raitu Bandhu, Raitu Bima
- Harithharam – plantation
- Mission Kakathiya
- Arogya Laxmi
- 24x7 Electricity

Education

- Literacy Rate – 65%
- Upper Primary School – 135 Students
- Mid Day Meal by Akshay Patra Foundation
- Separate toilets for Male & Female but cleanliness was not good
- Teachers were available
- Lack of basic infrastructure like benches, Playing ground, Fans in the classrooms



Mid Day Meal



| | |
|----------|---------------|
| 8 = 112 | 15 x 8 = 120 |
| 9 = 126 | 15 x 9 = 135 |
| 10 = 140 | 15 x 10 = 150 |
| 1 = 19 | 20 x 1 = 20 |
| 2 = 36 | 20 x 2 = 40 |
| 3 = 57 | 20 x 3 = 60 |
| 4 = 76 | 20 x 4 = 80 |
| 5 = 95 | 20 x 5 = 100 |
| 6 = 114 | 20 x 6 = 120 |
| 7 = 133 | 20 x 7 = 140 |
| 8 = 152 | 20 x 8 = 160 |
| 9 = 171 | 20 x 9 = 180 |
| 10 = 190 | 20 x 10 = 200 |

| | |
|-----------|-----------|
| SUNDAY | ఆదివారం |
| MONDAY | సోమవారం |
| TUESDAY | మంగళవారం |
| WEDNESDAY | బుధవారం |
| THURSDAY | గురువారం |
| FRI DAY | శుక్రవారం |
| SATURDAY | ఆదివారం |

School

మండలపరిషత్ ప్రాథమికోన్నత పాఠశాల
గ్రామం.. చక్రాపూర్, మండలం.. మూసాపేట, జిల్లా.. మహబూబ్ నగర్.

సర్వ సిక్సా అభియాన్

అక్షరకా చదవాలి - అంగరంగ వసనాలి





Anganwadi

- Good Attendance
- Weighing Machines & Height measuring device
- Food to children & Lactating Mothers
- Distributed toys to Children
- Proper record maintenance



CHAMPION
BASKET BALL





Anganwadi



Toys Distribution



PDS

- Only Rice was available
- Network issue for Biometric Device
- Storage of grains was proper
- Quality of rice was good

SHGs

- 32 Groups with 10 Members each
- Financing of small businesses like Salon, Common Service Centre, Rope Making
- Highest loan given was 7.5 lacs



Rope Making





Chappati Diagram



Suggestions for overall improvement of quality of life in village

- Attention should be given to cleanliness of toilets in school and proper playground should be made available to children.
- At least 1 health sub centre must be established in the village.
- Institutions for financial inclusion like banks, post office must be present.
- In Agriculture, replacement of more water intensive paddy like Paddy with less water intensive crops like legumes and horticulture crops can benefit farmers and increase soil productivity.
- Agriculture service centre with seeds, fertilizers etc should be opened.
- Establishment of Raythu Vedica can also help in shifting the cropping pattern.

A photograph of a weathered wooden wall. Two windows with wooden shutters are visible at the top. A horizontal wooden plank is mounted on the wall, and the words "THANK YOU." are painted in a bold, red, sans-serif font across it. The bottom of the image shows a dark, out-of-focus foreground.

THANK YOU.