

గ్రామ సచివాలయం - పర్లపల్లి

మం॥ తిమ్మాపూర్

జిల్లా॥ కలీంగనగర్

VILLAGE VISIT - PARIPALLY





# GROUP MEMBERS

Sh. Maria Shine A C13

Ms. Jyoti Yadav D21

Sh. Raj Prasad B31

Ms. Pooja Godara M25



# OBJECTIVE OF THE VILLAGE VISIT

Know the ground-level problems

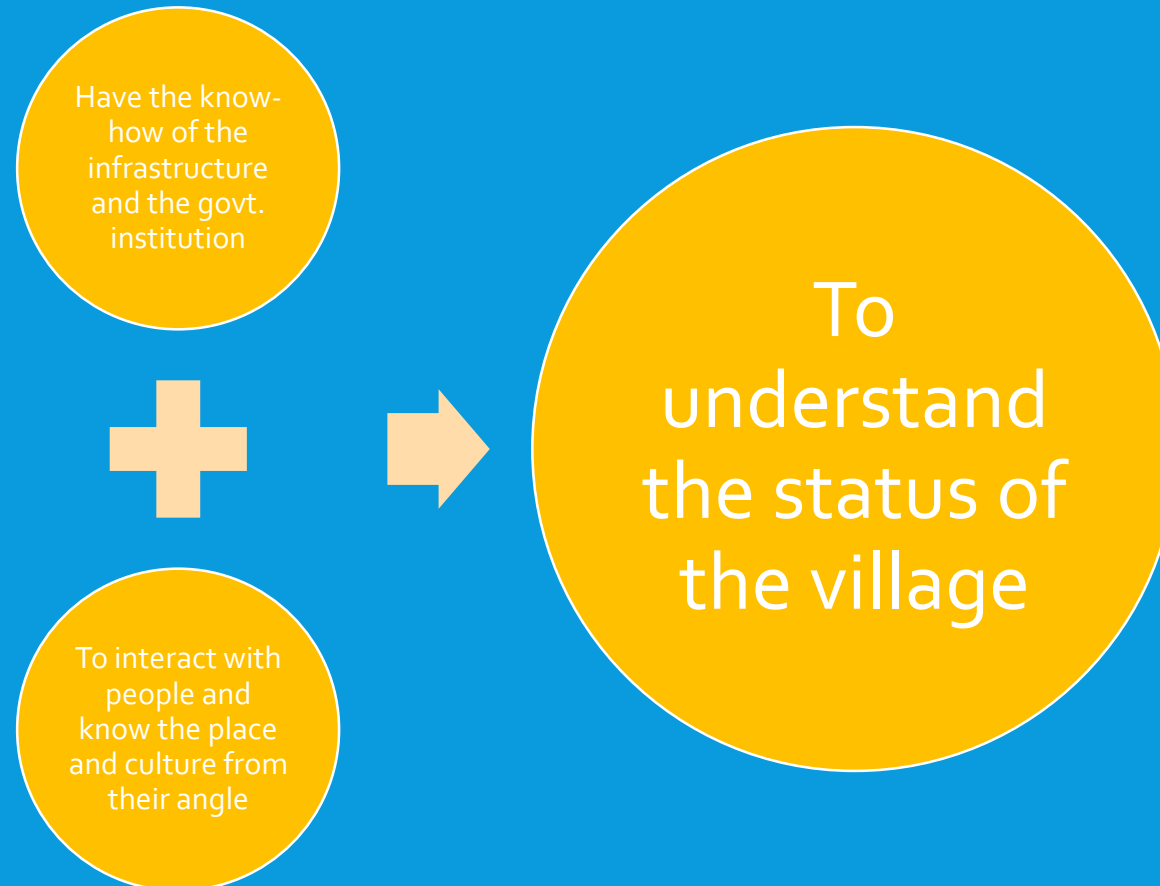
Finding solutions to them

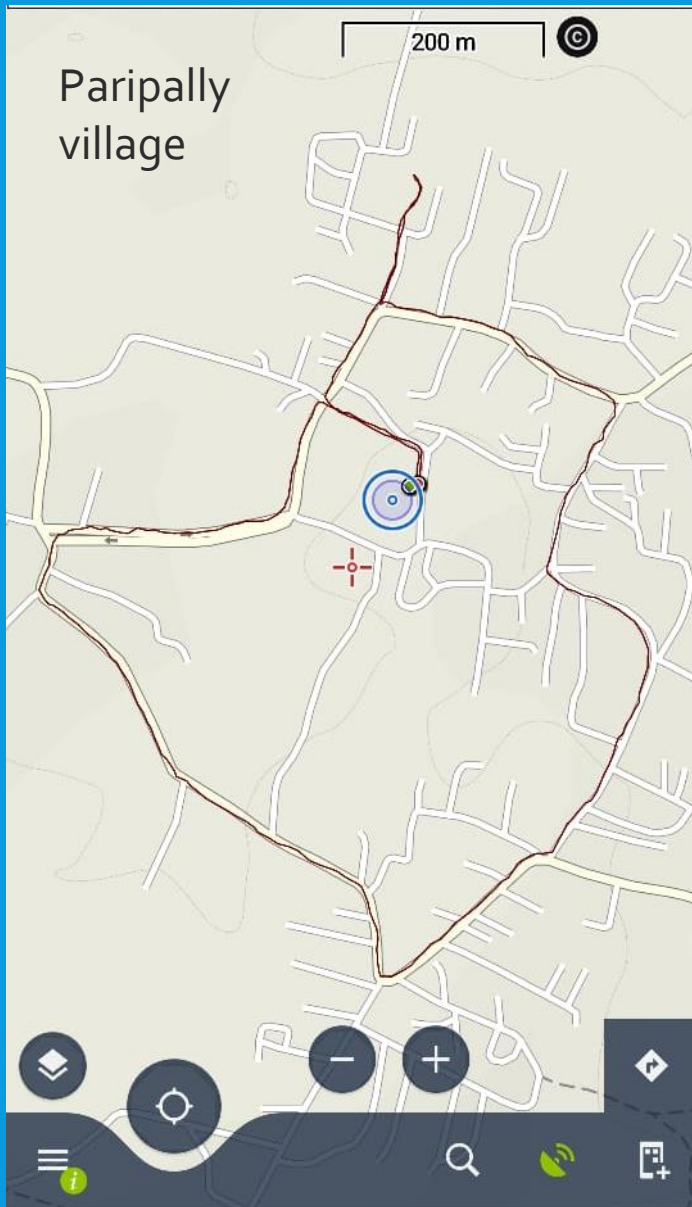
Recommendations

# FRAMEWORK OF THE VILLAGE VISIT



# STEP :- 1 – TRANSECT WALK





# TRANSECT LINE WALKING

Track Detail

Track name  
07.03 transect

Track Description

07 Mar 2022 18:28:42

Total Time:	Travelled
00:53:13	2.7 k
Moving Time	Avg Moving Speed
00:42:03	3.8 kph
Altitude Gain	Max Speed
18 m	13.9 kph
Min Altitude	Max Altitude
209 m	220 m
Min Grade	Max Grade
-4.0834 %	5.6126 %
Area	
0.22 sq km	



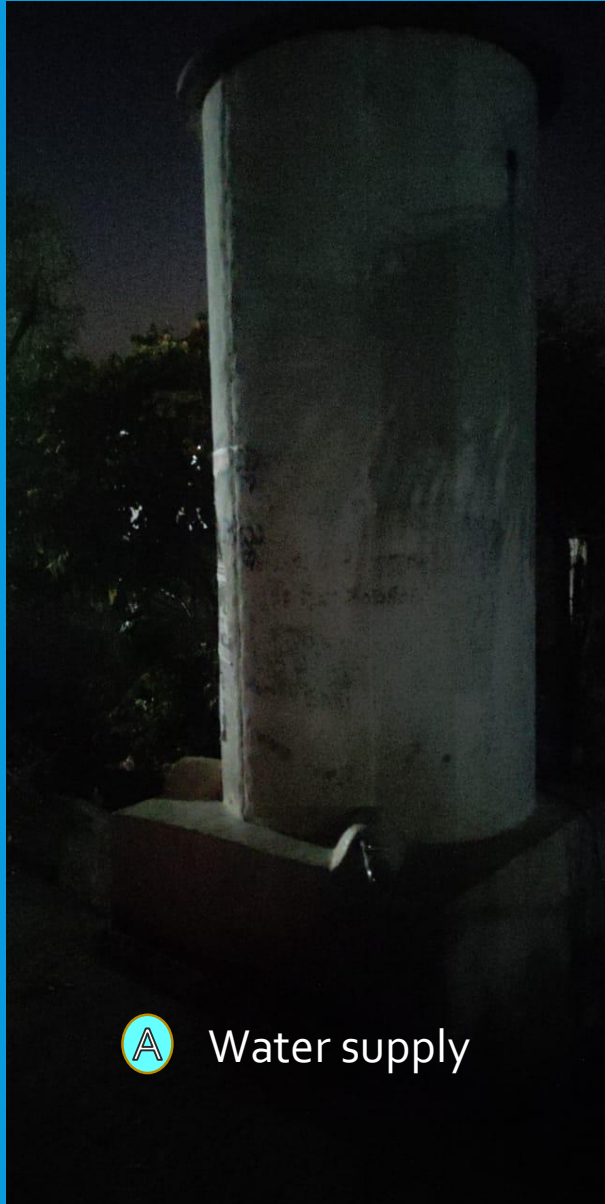
# TRANSECT LINE - OBSERVATIONS



Housing pattern

- A** Newly constructed apartment type houses.
- B** Traditional houses with their own courtyard.

# TRANSECT LINE - OBSERVATIONS



**A** Water supply



**B** Milk Collection centre



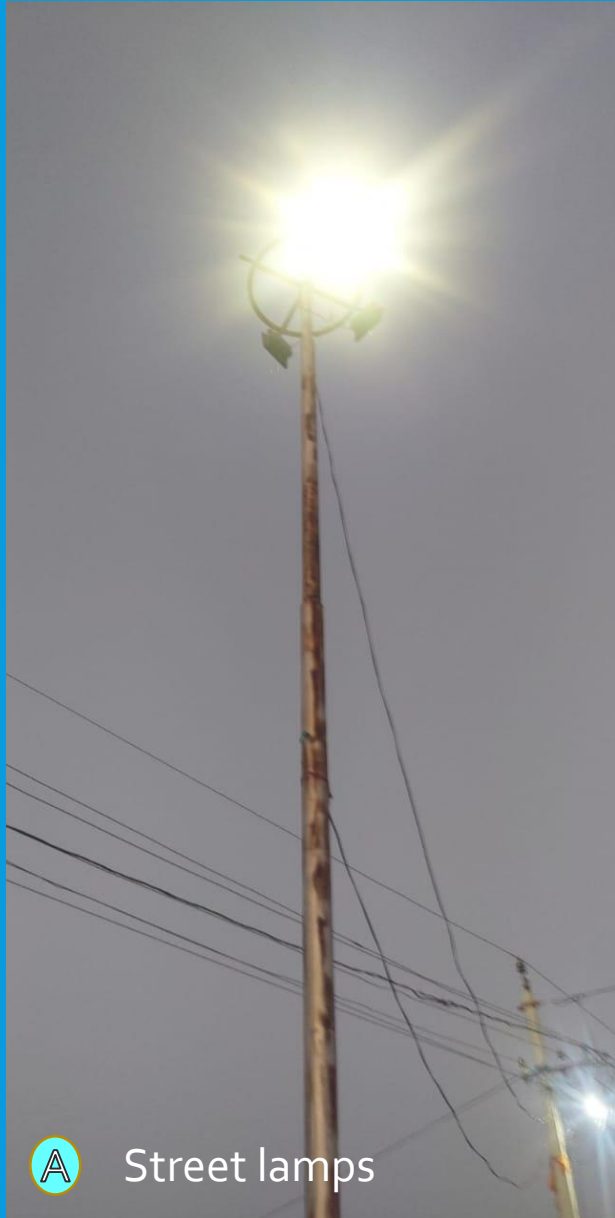
**C** Awareness campaign



**D** Water distribution centre



# TRANSECT LINE - OBSERVATIONS



# VISIT TO INSTITUTIONS



**A** Women's day celebration



**B** Primary school Visit



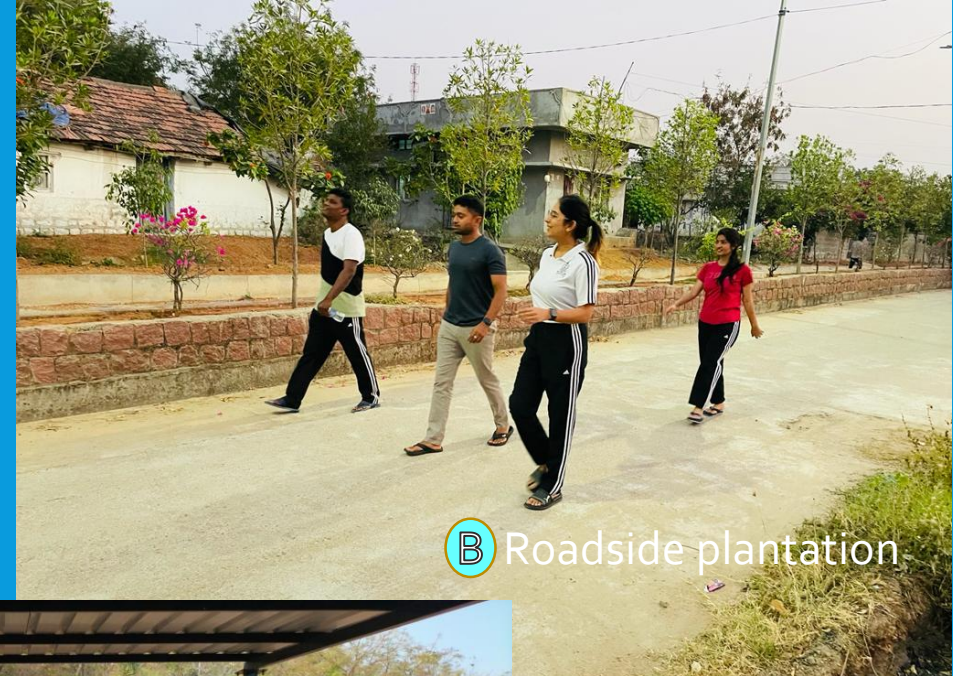
**C** Visit to Anganwadi centre



# ASSETS CREATED BY GP



A Palle prakriti vanam



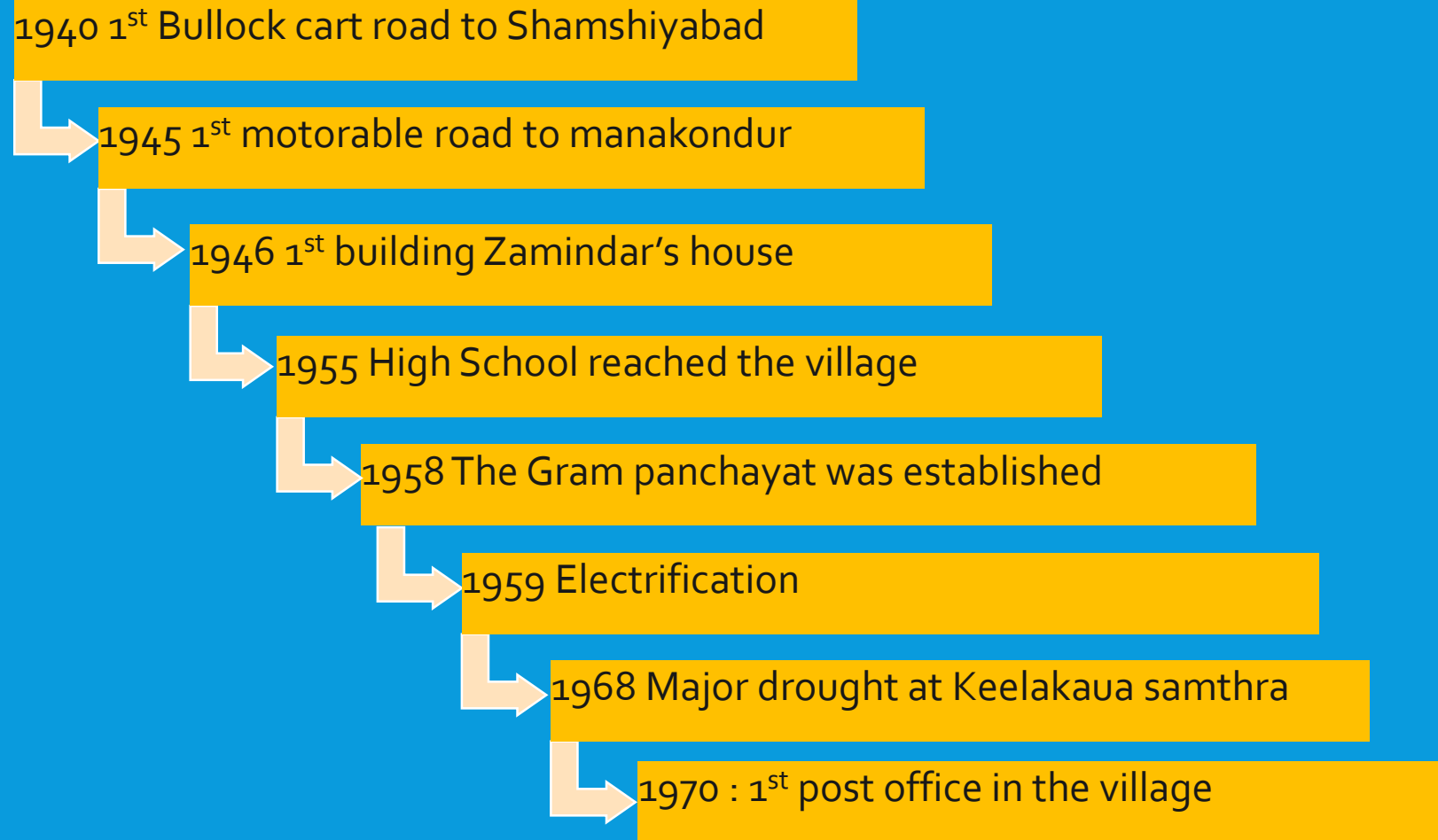
B Roadside plantation



C Waste Segregation shed



# HISTORICAL TIMELINE OF PARIPALLY



# HISTORICAL TIMELINE OF PARIPALLY

1977 1<sup>st</sup> Handpump in the village

1978 1<sup>st</sup> Borewell in the village

1982 1<sup>st</sup> Bank in the village

1983 1<sup>st</sup> radio in the village

1984 1<sup>st</sup> Television in the village

1987 1<sup>st</sup> landline in the village

1995 1<sup>st</sup> Primary Health Centre

1999 1<sup>st</sup> Mobile phone in the village

# STEP 2 – VILLAGE AT A GLANCE REPORT

## Geography

- Total area- 1585.16 hectares
- Climate – monsoonal
- Plain area surrounded by hills from 3 sides
- Red and black soil
- Vegetation :- moist and dry deciduous , tropical thorn type

## Occupational structure

- wage labourers :- 1951/3870
- Agricultural labourers :- 1129/3870



## Step 2 – village at a glance report

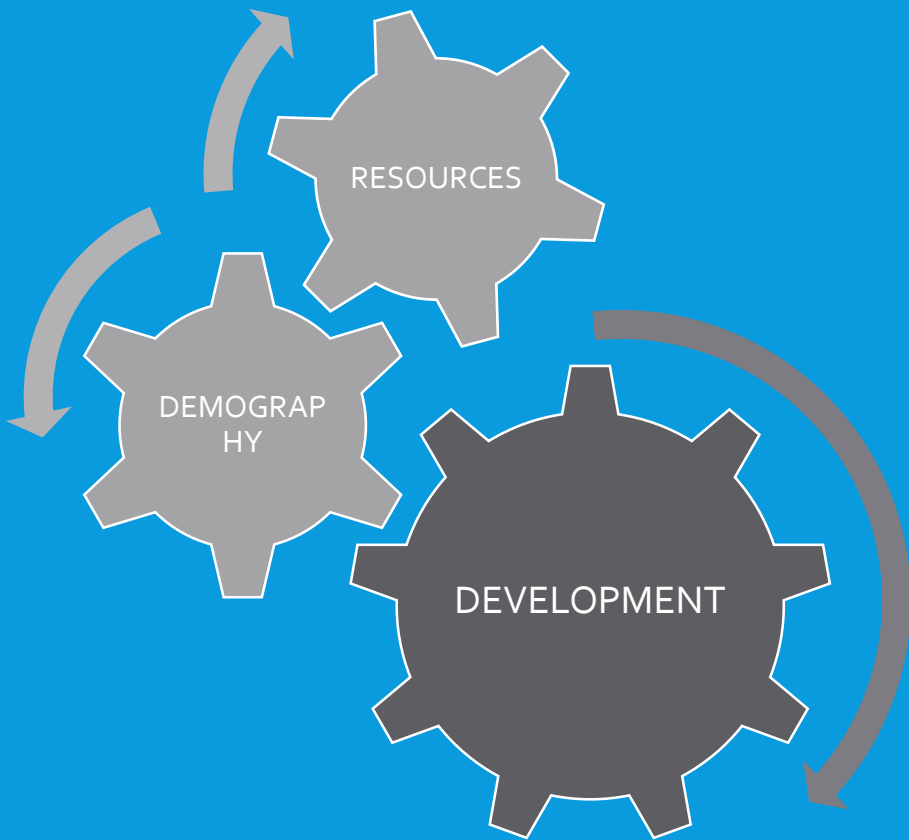
### Financial profile of GP

- 14th FC Grants: Rs. 12lakh
- SFC Grants: Rs. 30 lakh
- GP Fund: Rs. 50 lakh
- Tax collections: Rs 51000, Non Tax collections: Rs. 21000
- Taxable households: 87.6%

### Economic Infrastructure

- Households with Tap connections
- Cell towers, Street lights LED
- Roads: 12500 m, CC roads, BT Road, Metal Road, no Kachha road
- Open wells, Handpumps, 80% functional
- Bank account coverage: 70%, Aadhaar card coverage: 85%

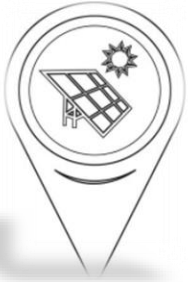
# Step 2:- Social mapping and Resource mapping



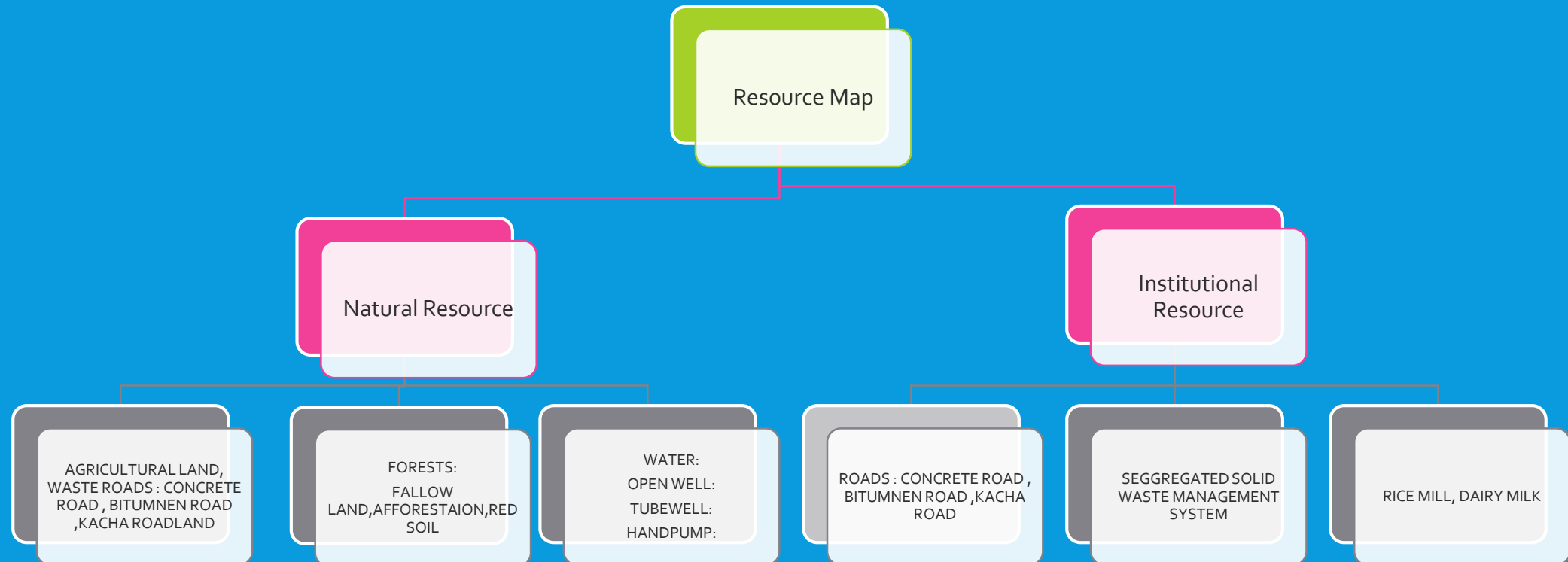


Resource map of the village





# RESOURCE MAP





SOCIAL MAP

# SOCIAL MAP

## CASTE :

OBCS : Kurma, Moonuru Kappu, Yadav  
Scheduled caste : Mala, madhika

## RELIGION

Predominantly hinduism

## LANGUAGE

Telugu

# STEP 4 :- SITUATION ANALYSIS AND VILLAGE ACTION PLAN







# HEALTHCARE IN THE VILLAGE

## Infrastructure

- There's one health sub-centre in Paripally; Mandal PHC is in Thimapur
- Healthcare workers: 2 ANMs & 3 ASHA workers





# WORKING OF HEALTH SUB-CENTRE, PARIPALLY

- Regular Household survey is conducted in the village by the ASHA workers as per the guidelines of NRHM. They maintain data like MCP (mother-child protection) cards, no. of couples, contraceptive usage by villagers, etc.
- Monthly meetings are conducted by Village Health, Nutrition and Sanitation Committee(VHNC) for overall health, TB, etc. The health sub-centre also maintains a Citizen's Charter for people's perusal.
- Regular awareness camps are held for spreading awareness about COVID, HIV, menstrual hygiene, breast cancer awareness, cervical cancer awareness, oral cancer, etc.
- 100% immunization of children of below 1 year of age, 100% covid vaccination of 1<sup>st</sup> dose & 80% of 2<sup>nd</sup> dose, regular vaccination drives for the population like polio, DPT, MR, JE, vit. A, vit. K, vit. D, high life expectancy, etc. are among some of the many achievements of the dedicated health workers of health sub-centre.
- There are a total of 38 children <1 year of age & 31 pregnant females in the village. Every Wednesday and Saturday of the week are dedicated for vaccination for them. Proper ante-natal and post-natal care and follow-up by healthcare workers.
- Active usage for Patient Transport Services' (PTS) helplines like 102 & 104 by health workers for the villagers. Health workers also provide medicines for common diseases like diarrhoea, common flu, Fever, Filaria, etc.



# AIDS AWARENESS PROGRAMME





# HEALTH :- CHALLENGES AND ACTION PLAN

## Challenges

- High number of Filaria cases
- Hospital is far off (8km); PHC is in Thimapur mandal
- Low strength of staff; no doctor availability in the village
- 2<sup>nd</sup> ANM is not regular; high workload and low salary

## Solutions

- Mosquito control measures for Filaria
- Dedicated PHC for the village
- More healthcare workers esp a doctor, ANMs, and ASHA workers.





# ICDS- ANGANWADIS

- There are 4 anganwadi centres in the village consisting of happy and dedicated workers catering to around 60 children of 1-6 years of age, 31 pregnant females and 14 lactating mothers.
- Cooked meals for both pregnant females, lactating mothers, children which includes eggs, pulses, vegetables, milk, etc. following a weekly chart. IFA syrup for children and IFA tablets for pregnant females and lactating mothers are provided regularly.
- POSHAN diwas on 1<sup>st</sup> and 3<sup>rd</sup> Tuesday of every month; POSHAN month is celebrated in September every year.
- **Achievements**: only one case of low birth weight in past two years. Height and weight of children are in healthy category; sanitation drive on every Friday of the week.





# ICDS- ISSUES AND CHALLENGES

## CHALLENGES

- Low strength of staff and high workload
- Cargo service for goods is not available to the village and the workers have to use public transport to collect goods from other centres.

## SOLUTIONS

- Recruitment of more Anganwadi workers
- Better transport facility for the supply of goods to the Anganwadi centres.

1 NO  
POVERTY



# POVERTY ALLEVIATION PROGRAM :- MGNREGA

## MGNREGA: an enabler for this agrarian village

- The number of wage seekers under MNREGA have increased significantly from 150 in 2006 to 2091 in 2021.
- 70% workers are female, 880 job cards have been issued.
- The discrepancy between job cards issued and wage seekers enrolled is due to:
  - Large farmers who have enrolled in MNREGA but are uninterested to work due to plentiful produce.
  - There is 100 % enrollment among the marginalized communities.
- The major construction activities undertaken under MNREGA includes:
  - Restoration of Farm ponds,
  - Feeder channels,
  - Toilets in the Govt. Schools,
  - Soak pits for both individual Family(magic soak pit) and community.
- The workers are paid Rs.240 per day.An amount of Rs.30 to 40 lakhs were invested under MNREGA in paripally village FY2021-22
- Geo-tagging and pictures are recorded for the construction before, during and after work.
- No discrepancy in wages is seen between male and female workers(Gender neutrality)









Melakunda pond restoration



Weed Eradication





# WOMEN EMPOWERMENT THROUGH SELF HELP GROUPS



## SHG (Self -Help Group working)

- ❖ Micro-credit provision through Telangana grameen bank
- ❖ Women are involved in productive income generating jobs like weaving ,agri works,cement and kirana shops etc
- ❖ The peer pressure acts as an instrument in prompt repaid of loans
- ❖ Has improved the standard of living of rural women
- ❖ SHG –Paripally
- ❖ Total 74 groups are registered
- ❖ Funding through Telangana Grameen bank



# SANITATION

- Soak pits(Individual and community level).
- Water recharge and filter unit at primary school.
- Solid waste management: Plastic waste collection units, Dustbins along roadside (at the distance of every 100 yards)
- Mode of lifting of waste: Tricycle (5), Tractor (0), Bullock carts(0) for distance of 2 km
- Avenue plantation : tall trees along the roads.
- Declared ODF+ village
- Drain cleaning .
- Efforts towards making the village plastic free : waste segregation through sheds.

Waste Segregation shed.



Rainwater harvesting unit.





# AGRICULTURE AND LIVE STOCK





# PANCHAYATI RAJ INSTITUTIONS

- ❑ Members: Male = 6, Female =6 ( 5 + Sarpanch)
- ❑ Greenery around the building
- ❑ Separate offices of Sarpanch, secretary, etc.
- ❑ New Building constructed (Currently OLD Gram panchayat Building in use)
- ❑ Number of meetings held during last one year- 12
- ❑ Our team participated in the Gram Sabha held on 2 Oct. , 2019
- ❑ Issues discussed in the Gram Sabha : Liquor ban, Plastic ban
- ❑ Extra Activities : Felicitation of the workers in the Gram Panchayat, discussion on the thoughts of the Mahatma Gandhi





# EDUCATION

## Education

- Primary school : 1 Total student 151 (77boys and 74girls)
- Zila Parishad high school : 1 total student 131 (67 and 64 girls)
- Private school :1 total student 30
- Proper gender wise toilet facilities
- One library in high school
- Playground and open gym in high school
- Childern in age group of 0-15 : 22%
- People in age group of 15-25 :25%
- Approximate population of village : 10% only old people
- 23 student in class 6<sup>th</sup> ,28 student in 7<sup>th</sup> ,18 student in class 8<sup>th</sup> ,32 student in class 9<sup>th</sup> ,26 student in 10<sup>th</sup> class



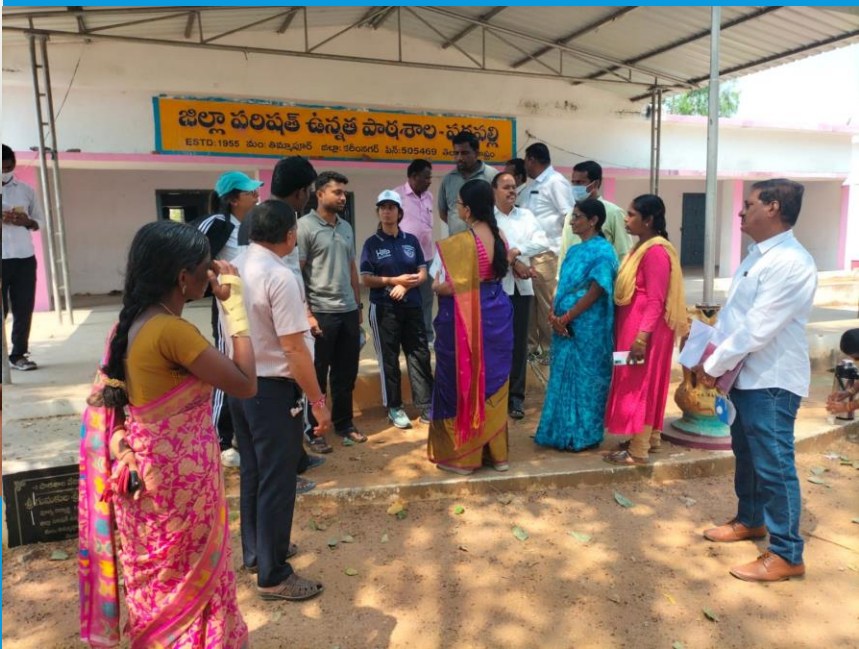
# LEARNING OUTCOMES BY CONDUCTING SURVEYING :

## OUTCOMES :

- No Dropout till Graduation (Monitoring)
- Good Proficiency in English and Telugu language (In Primary & Secondary Standard)
- Telugu (Reading & Speaking )
- Preference for Govt. School (Less strength in Private school)
- Better Teaching in primary and Secondary school
- Extra Curriculum activities :Cultural, Debates, Sports events (Student selected for national level in tug of war)
- Participation in Inter district tournament
- Best school award by state Govt : Secondary School .
- Mid day meal scheme : Proper Implementation
- Digitally Equipped Secondary school ( Online classes conducted during covid situation )



# INTERACTION WITH STUDENTS AND TEACHERS







# CHALLENGES AND ACTION PLAN

Challenges	Action plan
Generating interest of student to pursue career in sports	Sports Education and orientation
Issues in English reading skills ( level 5to 7 they read properly but cant understand the meaning	Extra classes should conduct for student.
Library is not in good condition and Less books	Gram Panchayat Fund or Private Donations
Less Teaching Staff in Primary School	Guest Teachers or Graduates of the Village can be roped in



- Mid day meal scheme implemented properly.
- Food quality is very good and Nourishment to Kids.
- Reduction in absenteeism.

# WAY FORWARD

The focus areas :

- Improving the housing condition through government support especially amongst the marginalised communities.
- Improving the frequency of the public transportation system.
- Better digitisation of the GPs.
- Bringing e-learning to the government school for improved learning outcomes.
- Training of the teachers in language skills and other co-curricular activities.
- Standardisation of education for infants at the pre-school level at the anganwadis.
- Exploring the opportunities of Agro-based industries and creating employment opportunities.



# WAY FORWARD FOR SDG BASED VILLAGE ACTION PLAN

Training of Gram Panchayat employees and beneficiaries about Central and State Government schemes and their convergence: CONVERGENCE OF MULTIPLE SCHEMES TO A SDG RATHER THAN MULTIPLE SDGs to a SCHEME

SDG Monitoring of Village based on monitoring framework for indicators being developed by Telangana State Development Planning Society (TSDPS): involving village children in the same

Creating a SDG based Gram Panchayat profile online and encouraging campaign based competition amongst nearby villages, Village to Village Linkage Program

SDG based Budgeting: mapping budget estimates of Village with each indicator of SDG: prior to that, ensuring proper budgeting plans at Village level uploaded online

THANK YOU

